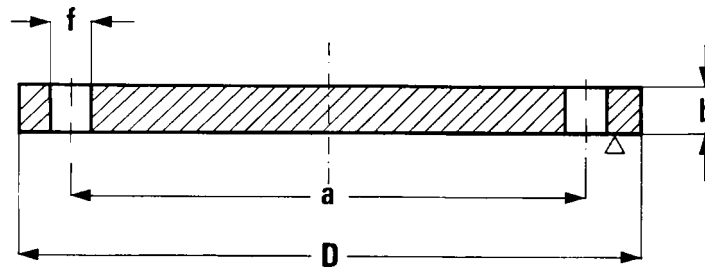


# Flange cieche UNI 6091-67 PN 6

DIN 2527 ND 6



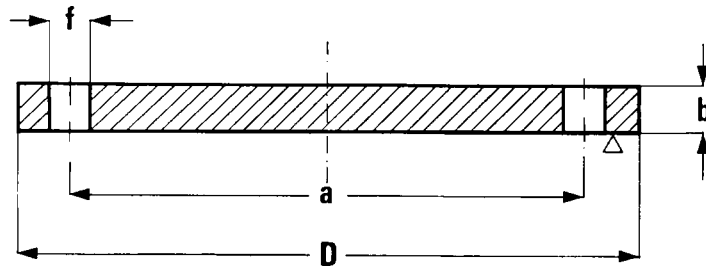
DN	a	D	b	f	VITI	N. FORI	Kg.
10	50	75	12	11	M10	4	0,380
15	55	80	12	11	M10	4	0,440
20	65	90	14	11	M10	4	0,650
25	75	100	14	11	M10	4	0,820
32	90	120	14	14	M12	4	1,170
40	100	130	14	14	M12	4	1,390
50	110	140	14	14	M12	4	1,620
65	130	160	14	14	M12	4	2,140
80	150	190	16	18	M16	4	3,430
100	170	210	16	18	M16	4	4,220
125	200	240	18	18	M16	8	6,110
150	225	265	18	18	M16	8	7,510
200	280	320	20	18	M16	8	12,300
250	335	375	22	18	M16	12	18,500
300	395	440	22	22	M20	12	25,500
350	445	490	22	22	M20	12	31,800
400	495	540	22	22	M20	16	38,500
450	550	595	22	22	M20	16	47,000
500	600	645	24	22	M20	20	60,400

DN sizes below are not included in the UNI standard

600	705	755	24	25	M22	20	-
700	810	860	24	25	M22	24	-
800	920	975	24	30	M27	24	-
900	1020	1075	26	30	M27	24	-
1000	1120	1175	26	30	M27	28	-
1100	1240	1305	30	33	M30	28	-
1200	1340	1405	32	33	M30	32	-
1300	1450	1520	32	36	M33	32	-
1400	1560	1630	34	36	M33	36	-
1500	1660	1730	34	36	M33	36	-
1600	1760	1830	34	36	M33	40	-
1800	1970	2045	36	39	M36	44	-
2000	2180	2265	38	42	M39	48	-

# Flange cieche UNI 6092-67 PN 10

DIN 2527 ND10



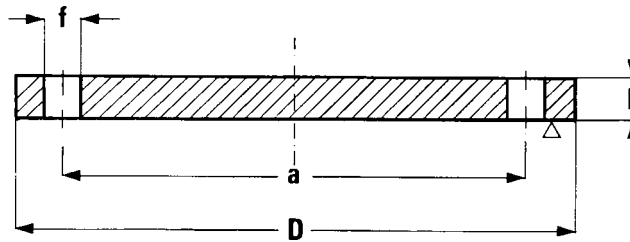
DN	a	D	b	f	VITI	N. FORI	Kg.
10	60	90	14	14	M12	4	0,630
15	65	95	14	14	M12	4	0,710
20	75	105	16	14	M12	4	1,010
25	85	115	16	14	M12	4	1,220
32	100	140	16	18	M16	4	1,800
40	110	150	16	18	M16	4	2,090
50	125	165	18	18	M16	4	2,870
65	145	185	18	18	M16	4	3,650
80	160	200	20	18	M16	4	4,610
100	180	220	20	18	M16	8	5,650
125	210	250	22	18	M16	8	8,120
150	240	285	22	22	M20	8	10,500
200	295	340	24	22	M20	8	16,500
250	350	395	24	22	M20	12	24,100
300	400	445	26	22	M20	12	30,800
350	460	505	26	22	M20	16	39,600
400	515	565	26	25	M22	16	49,600
450	565	615	26	25	M22	20	58,600
500	620	670	28	25	M22	20	73,300

DN sizes below are not included in the UNI standard

600	725	780	28	30	M27	20	
700	840	895	30	30	M27	24	
800	950	1015	33	33	M30	24	
900	1050	1115	34	33	M30	28	
1000	1160	1230	34	36	M33	28	
1100	1270	1340	36	36	M33	32	
1200	1380	1455	38	39	M36	32	
1300	1490	1575	38	43	M39	32	
1400	1590	1675	38	43	M39	36	
1500	1700	1785	40	43	M39	36	
1600	1820	1915	40	48	M45	40	
1800	2020	2115	40	48	M45	44	
2000	2230	2325	42	48	M45	48	

# Flange cieche UNI 6093-67 PN 16

DIN 2527 ND 16



DN	a	D	b	f	VITI	N. FORI	Kg.
10	60	90	14	14	M12	4	0,630
15	65	95	14	14	M12	4	0,710
20	75	105	16	14	M12	4	1,010
25	85	115	16	14	M12	4	1,220
32	100	140	16	18	M16	4	1,800
40	110	150	16	18	M16	4	2,090
50	125	165	18	18	M16	4	2,870
65	145	185	18	18	M16	4	3,650
80	160	200	20	18	M16	8	4,610
100	180	220	20	18	M16	8	5,650
125	210	250	22	18	M16	8	8,120
150	240	285	22	22	M20	8	10,500
200	295	340	24	22	M20	12	16,500
250	355	405	26	25	M22	12	25,100
300	410	460	28	25	M22	12	35,200
350	470	520	30	25	M22	16	48,200
400	525	580	32	30	M27	16	63,500
450	585	640	32	30	M27	20	77,200
500	650	715	34	33	M30	20	102,000

DN sizes below are not included in the UNI standard

600	770	840	36	36	M33	20	
700	840	910	38	36	M33	24	
800	950	1025	40	39	M36	24	
900	1050	1125	42	39	M36	28	
1000	1170	1255	44	42	M39	28	
1100	1270	1355	36	42	M39	32	
1200	1390	1485	38	48	M45	32	
1300	1490	1585	38	48	M45	32	
1400	1590	1685	38	48	M45	36	
1500	1710	1820	40	56	M52	36	
1600	1820	1930	40	56	M52	40	
1800	2020	2130	40	56	M52	44	
2000	2230	2345	42	62	M56	52	