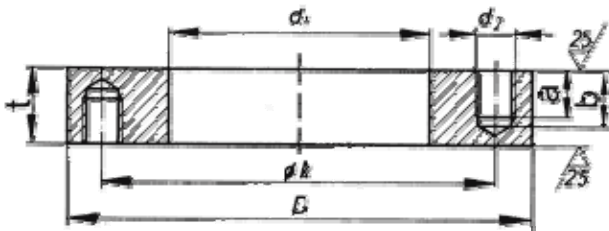


Skottflens Dobbel NS2539 PN10 FLANGE DATA CHART – JINAN HYUPSHIN FLANGES CO., LTD



| Dim. ND | Flens | | | | Gjengehull | | | | Vekt |
|---------|-------|-------|-------|------|------------|--------|------|------|-------|
| | D mm | d1 mm | Øk mm | t mm | Ant | Gjenge | a mm | b mm | Kg |
| 200 | 340 | 210 | 295 | 38 | 2x8 | M20 | 23 | 29 | 15,70 |
| 250 | 395 | 260 | 350 | 38 | 2x12 | M20 | 23 | 29 | 19,1 |
| 300 | 445 | 310 | 400 | 38 | 2x12 | M20 | 23 | 29 | 22,3 |
| 350 | 505 | 350 | 460 | 38 | 2x16 | M20 | 23 | 29 | 28,9 |
| 400 | 565 | 400 | 515 | 44 | 2x16 | M24 | 28 | 34 | 39,5 |
| 450 | 615 | 450 | 565 | 44 | 2x20 | M24 | 28 | 34 | 43 |
| 500 | 670 | 500 | 620 | 44 | 2x20 | M24 | 28 | 34 | 49,3 |

Jinan Hyupshin Flanges Co., Ltd - Chinese Flanges Manufacturer - <http://www.hsflange.com> - email: sale@hyupshin.cn

HYUPSHIN FLANGES