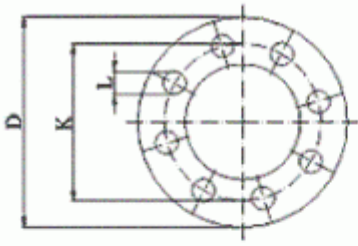


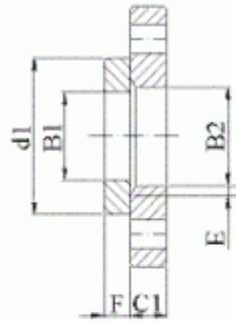
**Dimensions of PN 25 Flanges DIN EN 1092-1**



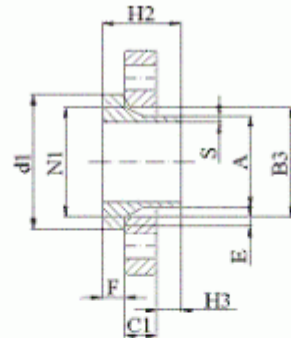
Not shown are Typ 02 in 35



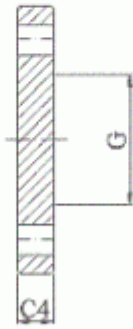
Typ 01



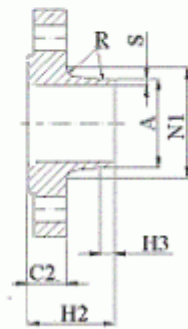
Typ 02 in 32



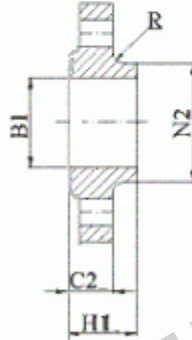
Typ 04 in 34



Typ 05



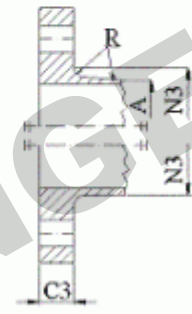
Typ 11



Typ 12



Typ 13



Typ 21

**NOTE 1:** Dimensions N1, N2 and N3 are measured at the intersection of the hub draft angle and the back face of the flange.

**NOTE 2:** For d1 dimensions see document "Flange facing according to DIN EN 1092-1".

**Dimensions in mm**

Nominal diameter DN	Mating dimensions					Outside diameter of neck A	Bore diameters			Flange thickness				Chamfer E	Collar thickness F	Diameter of shoulder G max	Length			Neck diameters			Corner radius R	Neck thickness (preferred value) S
	Outside diameter	Diameter of bolt circle	Diameter of bolt hole	Bolts			B1	B2	B3	C1	C2	C3	C4				H1	H2	H3	N1	N2	N3		
	D	K	L	No	Size																			
	Flange Type						11	01	02	04	01	11	21				05	02	32	05	12	11		
					21*	12			02	12			04	34		13	34	34	34	13		12	13	34
					34	32			04	13												21	13	21
10	Use PN 40 dimensions																							
15	Use PN 40 dimensions																							
20	Use PN 40 dimensions																							
25	Use PN 40 dimensions																							
32	Use PN 40 dimensions																							
40	Use PN 40 dimensions																							
50	Use PN 40 dimensions																							
65	Use PN 40 dimensions																							
80	Use PN 40 dimensions																							
100	Use PN 40 dimensions																							
125	Use PN 40 dimensions																							
150	Use PN 40 dimensions																							
200	360	310	26	12	M24	219,1	221,5	226	250	32	30	30	30	6	26	190	52	80	16	244	256	252	10	6,3
250	425	370	30	12	M27	273,5	276,5	281	302	35	32	32	32	8	26	235	60	88	18	298	310	304	12	7,1
300	485	430	30	16	M27	323,9	327,5	333	356	38	34	34	34	8	28	285	67	92	18	352	364	364	12	8,0
350	555	490	33	16	M30	355,6	359,5	365	408	42	38	38	38	8	32	332	72	100	20	398	418	418	12	8,0
400	620	550	36	16	M33	406,4	411,0	416	462	46	40	40	40	8	34	380	78	110	20	452	472	472	12	8,8
450	670	600	36	20	M33	457,0	462,0	467	510	50	46	46	46	8	36	425	84	110	20	500	520	520	12	8,8
500	730	660	36	20	M33	508,0	513,5	519	568	56	48	48	48	8	38	475	90	125	20	558	580	580	12	10,0
600	845	770	39	20	M36	610,0	616,5	622	670	68	58	58	58	8	40	575	100	125	20	660	684	684	12	11,0
700	960	875	42	24	M39	711,0	-	-	-	46	50	-	-	-	-	-	125	20	760	-	780	12	12,5	
800	1085	990	48	24	M45	813,0	-	-	-	50	54	-	-	-	-	-	135	22	864	-	882	12	14,2	
900	1158	1090	48	28	M45	914,0	-	-	-	54	58	-	-	-	-	-	145	24	968	-	982	12	16,0	
1000	1320	1210	56	28	M52	1016,0	-	-	-	58	62	-	-	-	-	-	155	24	1070	-	1086	16	17,5	
1200	1530	1420	56	32	M52	1219	-	-	-	-	70	-	-	-	-	-	-	-	-	-	1296	18	-	
1400	1755	1640	62	36	M56	1422	-	-	-	-	76	-	-	-	-	-	-	-	-	-	1508	18	-	
1600	1975	1860	62	40	M56	1626	-	-	-	-	84	-	-	-	-	-	-	-	-	-	1726	20	-	
1800	2195	2070	70	44	M64	1829	-	-	-	-	90	-	-	-	-	-	-	-	-	-	1920	20	-	
2000	2425	2300	70	48	M64	2032	-	-	-	-	96	-	-	-	-	-	-	-	-	-	2150	20	-	

\* For flanges type 21 the outside hub diameter approximately corresponds to the outside pipe diameter.

**NOTE:** The p/t ratings from EN 1092-1 apply only for flange types 05, 11, 12, 13 and 21 having nominal sizes up to and including DN 600. The p/t rating of all other flanges shall be agreed between the manufacturer and the purchaser.