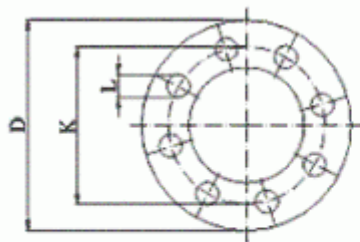
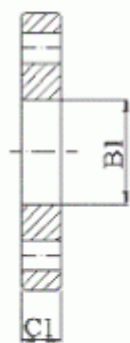


Dimensions of PN 2.5 Flanges DIN EN 1092-1



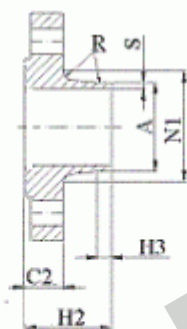
Not shown are Typ 02 in 35,
Typ 02 in 36, Typ 02 in 37



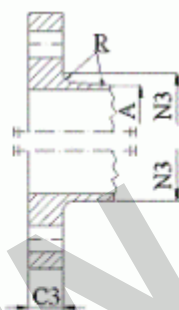
Typ 01



Typ 05



Typ 11



Typ 21

NOTE 1: Dimensions N1, N2 and N3 are measured at the intersection of the hub draft angle and the back face of the flange.

NOTE 2: For d1 dimensions see document "Flange facing according to DIN EN 1092-1".

Dimensions in mm

Nominal diameter	Mating dimensions																			Shoulder diameter	Length					Neck		Corner radius	Neck thickness (preferred values)
	Outside diameter	Diameter of bolt circle	Diameter of bolt hole	Bolting		Outside diameter of neck	Bore diameters		Flange Thickness			Collar thickness			Gmax	H2	H3	H4	H4		H5	Diameters							
				No.	Size		A	B1	B2	C1	C2/C3	C4	F									N1	N3	R1	S				
DN	D	K	L	No.	Size	A	B1	B2	C1	C2/C3	C4	Flange type (Typ)					F	H2	H3	H4	H4	H5	N1	N3	R1	S			
10	75	50	11	4	M10	17.2	18	21	12	12	12	10	5	2	2.5	-	28	6	28	35	7	26	20	4					
15	80	55	11	4	M10	21.3	22	25	12	12	12	10	5	2	2.5	-	30	6	30	38	7	30	26	4					
20	90	65	11	4	M10	26.9	27.5	31	14	14	14	10	6	2.5	3	-	32	6	32	40	8	38	34	4					
25	100	75	11	4	M10	33.7	34.5	38	14	14	14	10	7	2.5	3	-	35	6	35	40	10	42	44	4					
32	120	90	14	4	M12	42.4	43.5	46	16	14	14	10	8	3	3	-	35	6	35	42	12	55	54	6					
40	130	100	14	4	M12	48.3	49.5	53	16	14	14	10	8	3	3	-	38	7	38	45	15	62	64	6					
50	140	110	14	4	M12	60.3	61.5	65	16	14	14	12	8	3	3	-	38	8	38	45	20	74	74	6					
65	160	130	14	4	M12	76.1	77.5	81	16	14	14	12	8	3	3	55	38	9	38	45	20	88	94	6					
80	190	150	18	4	M16	88.9	90.5	94	18	16	16	12	10	3	4	70	42	10	42	50	25	102	110	8					
100	210	170	18	4	M16	114.3	116	120	18	16	16	14	10	4	4	90	45	10	45	52	25	130	130	8					
125	240	200	18	8	M16	139.7	141.5	145	20	18	18	14	10	4	4	115	48	10	48	55	25	155	160	8					
150	265	225	18	8	M16	168.3	170.5	174	20	18	18	14	10	5	4	140	48	12	48	55	25	184	182	10					
200	320	280	18	8	M16	219.1	221.5	226	22	20	20	16	11	5	5	190	55	15	55	62	30	236	238	10					
250	375	335	18	12	M16	273	276.5	281	24	22	22	18	12	8	-	235	60	15	60	68	-	290	284	12					
300	440	395	22	12	M20	323.9	327.5	333	24	22	22	18	12	8	-	285	62	15	62	68	-	342	342	12					
350	490	445	22	12	M20	355.6	359.5	365	26	22	22	18	13	8	-	330	62	15	62	68	-	385	392	12					
400	540	495	22	16	M20	406.4	411	416	28	22	22	20	14	8	-	380	65	15	65	72	-	438	442	12					
450	595	550	22	16	M20	457	462	467	30	22	24	20	15	8	-	425	65	15	65	72	-	492	494	12					
500	645	600	22	20	M20	508	513.5	519	30	24	24	22	16	8	-	475	68	15	68	75	-	538	544	12					
600	755	705	26	20	M24	610	616.5	622	32	30	30	22	16	-	-	575	70	16	70	-	-	640	642	12					
700	860	810	26	24	M24	711	-	721	40	30	40	-	16	-	-	670	76	16	70	-	-	740	746	12					
800	975	920	30	24	M27	813	-	824	44	30	44	-	16	-	-	770	76	16	70	-	-	842	850	12					
900	1075	1020	30	24	M27	914	-	926	48	30	48	-	16	-	-	860	74	16	70	-	-	942	950	12					
1000	1175	1120	30	28	M27	1016	-	1028	52	30	52	-	18	-	-	960	74	16	70	-	-	1 045	1 050	16					
1200	1375	1320	30	32	M27	1219	-	1234	60	32	50	-	20	-	-	1160	94	20	90	-	-	1 245	-	16					
1400	1575	1520	30	36	M27	1422	-	-	-	38	-	-	-	-	-	1346	96	20	-	-	-	1 445	-	16					
1600	1790	1730	30	40	M27	1626	-	-	-	46	-	-	-	-	-	1546	102	20	-	-	-	1 645	-	16					
1800	1990	1930	30	44	M27	1829	-	-	-	46	-	-	-	-	-	1746	110	20	-	-	-	1 845	-	16					
2000	2190	2130	30	48	M27	2032	-	-	-	50	-	-	-	-	-	1950	122	22	-	-	-	2 045	-	16					
2200	2405	2340	33	52	M27	2035	-	-	-	56	-	-	-	-	-	-	129	25	-	-	-	-	-	-	-				
2400	2605	2540	33	56	M30	2438	-	-	-	62	-	-	-	-	-	-	143	25	-	-	-	2 448	-	18					
2600	2805	2740	33	60	M30	2620	-	-	-	64	-	-	-	-	-	-	148	25	-	-	-	2 648	-	18					
2800	3030	2960	36	64	M30	2820	-	-	-	74	-	-	-	-	-	-	161	25	-	-	-	2 848	-	18					
3000	3230	3160	36	68	M33	3020	-	-	-	80	-	-	-	-	-	-	170	25	-	-	-	3 050	-	18					
3200	3430	3360	36	72	M33	3220	-	-	-	84	-	-	-	-	-	-	180	25	-	-	-	3 250	-	20					
3400	3630	3560	36	76	M33	3420	-	-	-	90	-	-	-	-	-	-	194	28	-	-	-	3 450	-	20					
3600	3840	3770	36	80	M33	3620	-	-	-	96	-	-	-	-	-	-	201	28	-	-	-	3 652	-	20					
3800	4045	3970	39	80	M36	3820	-	-	-	102	-	-	-	-	-	-	212	28	-	-	-	3 852	-	20					
4000	4245	4170	39	84	M36	4020	-	-	-	106	-	-	-	-	-	-	226	28	-	-	-	4 052	-	20					

* For flanges type 21 the outside hub diameter approximately corresponds to the outside pipe diameter.

NOTE: The p/t ratings from EN 1092-1 apply only for flange types 05, 11, 12, 13 and 21 having nominal sizes up to and including DN 600. The p/t rating of all other flanges shall be agreed between the manufacturer and the purchaser.

HYUPSHIN FLANGES