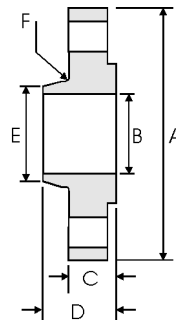
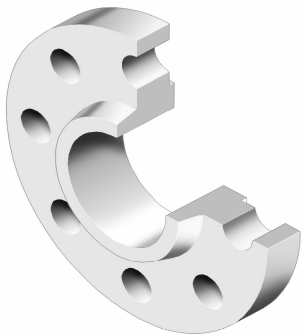


Slip On Flanges (Code 112) - BS 4504



DN	PN	A	B	C	D	E	F
		mm	mm	mm	mm	mm	mm
10	6	75	18.0	12	20	25	3
	10 & 16	90		14	20	30	
	25 & 40	90		16	22	30	
15	6	80	22	12	20	30	3
	10 & 16	95		14	20	35	
	25 & 40	95		16	22	35	
20	6	90	27.5	14	24	40	4
	10 & 16	105		16	24	45	
	25 & 40	105		18	26	45	
25	6	100	34.5	14	24	50	4
	10 & 16	115		16	24	52	
	25 & 40	115		18	28	52	
32	6	120	43.5	14	26	60	5
	10 & 16	140		16	26	60	
	25 & 40	140		18	30	60	
40	6	130	49.5	14	26	70	5
	10 & 16	150		16	26	70	
	25 & 40	150		18	32	70	
50	6	140	61.5	14	28	80	5
	10 & 16	165		18	28	84	
	25 & 40	165		20	34	84	
65	6	160	77.5	14	32	100	6
	10 & 16	185		18	32	104	
	25 & 40	185		22	38	104	
80	6	190	90.5	16	34	110	6
	10 & 16	200		20	34	118	
	25 & 40	200		24	40	118	
100	6	210	116.0	16	40	130	6
	10 & 16	220		20	40	140	
	25 & 40	235		24	44	145	
125	6	240	141.5	18	44	160	6
	10 & 16	250		22	44	168	
	25 & 40	270		26	48	170	
150	6	265	170.5	18	44	185	8
	10 & 16	285		22	44	195	
	25 & 40	300		28	75	190	

DN	PN	A	B	C	D	E	F
		mm	mm	mm	mm	mm	mm
200	6	320	221.5	20	44	240	8
	10 & 16	340		24	44	246	
	25	360		30	52	256	
	40	375		34	52	260	
250	6	375	276.5	22	44	295	10
	10	395		26	46	298	
	16	405		26	46	298	
	25	425		32	60	310	
300	6	440	327.5	22	44	355	10
	10	445		26	46	350	
	16	460		28	46	350	
	25	485		34	67	364	
350	6	515	359.5	26	53	400	10
	10	505		26	53	400	
	16	520		30	57	400	
	25	555		38	72	418	
400	6	580	411.0	26	57	456	10
	10	565		26	57	456	
	16	580		32	63	456	
	25	620		40	78	472	
450	6	660	462.0	28	63	502	12
	10	615		28	63	502	
	16	640		34	68	502	
	25	670		42	84	520	
500	6	685	513.5	28	67	559	12
	10	670		28	67	559	
	16	715		34	73	559	
	25	730		44	90	580	
600	6	780	616.5	28	75	658	12
	10	840		36	83	658	
	25	845		46	100	684	
	40	890		60	100	686	
-	-	-	-	-	-	-	-
-	-	-	-	-	-	-	-

Notes

- The hubs of slip on (code 112) flanges are parallel or have a draft <7 degrees.
- For drilling details see page 8-64.
- For tolerances see page 8-61.
- For facing types and dimensions see page 8-62.