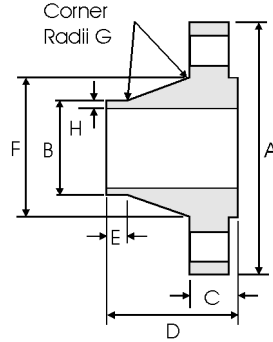
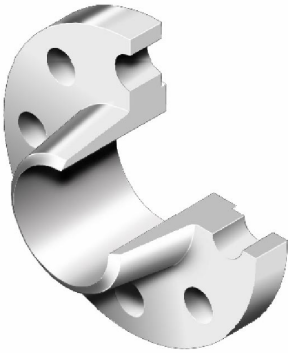


# Weld Neck Flanges (Code 111) - BS 4504



DN	PN	A	B	C	D	E	F	G	H	DN	PN	A	B	C	D	E	F	G	H	
		mm	mm	mm	mm	mm	mm	mm	mm			mm	mm	mm	mm	mm	mm	mm	mm	
10	2.5.6	75	17.2	12	28	6	26	3	1.8	100	2.5.6	210	114.3	16	45	12	10	130	6	3.6
	10	90		14	35		28		1.8		20	52		130	3.6					
	16	90		14	35		28		1.8		20	52		130	3.6					
	25	90		16	35		28		1.8		24	65		134	3.6					
	40	90		16	35		28		1.8		24	65		134	3.6					
15	2.5.6	80	21.3	12	30	6	30	3	2	125	2.5.6	240	139.7	18	48	12	10	155	6	4
	10	95		14	35		32		2		22	55		158	4					
	16	95		14	35		32		2		22	55		158	4					
	25	95		16	38		32		2		26	68		162	4					
	40	95		16	38		32		2		26	68		162	4					
20	2.5.6	90	26.9	14	32	6	38	4	2.3	150	2.5.6	265	168.3	18	48	12	16	184	8	4.5
	10	105		16	38		39		2.3		22	55		184	4.5					
	16	105		16	38		39		2.3		22	55		184	4.5					
	25	105		18	40		40		2.3		28	75		190	4.5					
	40	105		18	40		40		2.3		28	75		190	4.5					
25	2.5.6	100	33.7	14	35	6	42	4	2.6	200	2.5.6	320	219.1	20	55	16	15	236	8	5.6
	10	115		16	38		46		2.6		24	62		234	5.6					
	16	115		16	38		46		2.6		24	62		234	5.6					
	25	115		18	40		46		2.6		30	80		244	6.3					
	40	115		18	40		46		2.6		34	88		244	6.3					
32	2.5.6	120	42.4	14	35	6	55	5	2.6	250	2.5.6	375	273	22	60	18	15	290	10	6.3
	10	140		16	40		56		2.6		26	68		288	6.3					
	16	140		16	40		56		2.6		26	70		288	6.3					
	25	140		18	42		56		2.6		32	88		296	7.1					
	40	140		18	42		56		2.6		38	105		306	7.1					
40	2.5.6	130	48.3	14	38	7	62	5	2.6	300	2.5.6	440	323.9	22	62	18	15	342	10	7.1
	10	150		16	42		64		2.6		26	68		342	7.1					
	16	150		16	42		64		2.6		28	78		342	7.1					
	25	150		18	45		64		2.6		34	92		350	8					
	40	150		18	45		64		2.6		42	115		362	8					
50	2.5.6	140	60.3	14	38	8	74	5	2.9	350	2.5.6	490	355.6	22	62	20	15	385	10	7.1
	10	165		18	45		74		2.9		26	68		390	7.1					
	16	165		18	45		74		2.9		30	82		390	8					
	25	165		20	48		74		2.9		38	100		398	8					
	40	165		20	48		74		2.9		46	125		408	8.8					
65	2.5.6	160	76.1	14	38	9	88	6	2.9	400	2.5.6	540	406.4	22	65	20	15	438	10	7.1
	10	185		18	45		92		2.9		26	72		440	7.1					
	16	185		18	45		92		2.9		32	85		444	8					
	25	185		22	52		92		2.9		40	110		452	8.8					
	40	185		22	52		92		2.9		50	135		462	11					
80	2.5.6	190	88.9	16	42	10	102	6	3.2	450	2.5.6	595	457	24	65	20	15	492	12	7.1
	10	200		20	50		110		3.2		28	72		488	7.1					
	16	200		20	50		110		3.2		34	87		490	8					
	25	200		24	58		110		3.2		42	110		500	8.8					
	40	200		24	58		110		3.2		50	135		500	12.5					

# Weld Neck Flanges (Code 111) - BS 4504

DN	PN	A	B	C	D	E	F	G	H
		mm	mm	mm	mm	mm	mm	mm	mm
500	2.5,6	645	508	24	68	15	538	12	7.1
	10	670		28	75	16	540		7.1
	16	715		34	90		546		8
	25	730		44	125	20	558		10
	40	755		52	140		562		14.2
600	2.5,6	755	610	24	70	16	640	12	7.1
	10	780		28	80	18	640		7.1
	16	840		36	95		650		8.8
	25	845		46	125	20	660		11
	40	890		60	150		666		16
700	2.5	860	711	24	70	16	740	12	7.1
	6	860		24	70		740		7.1
	10	895		30	80	18	746		8
	16	910		36	100		750		8.8
	25	960		46	125	20	760		12.5
800	2.5	975	813	26	70	16	842	12	7.1
	6	975		24	70		842		7.1
	10	1015		32	90	18	848		8
	16	1025		38	105	20	848		10
	25	1085		50	135	22	864		14.2
900	2.5	1075	914	26	70	16	942	12	7.1
	6	1075		26	70		942		7.1
	10	1115		34	95	20	948		10
	16	1125		40	110		948		10
	25	1185		54	145	24	968		16
1000	2.5	1175	1016	26	70	16	1045	12	7.1
	6	1175		26	70		1045		7.1
	10	1230		34	95	20	1050		10
	16	1255		42	120	22	1056		10
	25	1320		58	155	24	1070		17.5
1200	2.5	1375	1220	26	70	16	1245	16	7.1
	6	1405		28	90		20		1248
	10	1455		38	115	25	1256		11
	16	1485		48	130	30	1260		12.5
	25	1575		66	180	36	1284		17.5
1400	2.5	1575	1420	26	70	16	1445	16	7.1
	6	1630		32	90		20		1452
	10	1675		42	120	25	1460		12
	16	1685		52	145	30	1465		14.2
	25	1790		70	195	36	1484		17.5
1600	2.5	1790	1620	26	80	20	1645	16	7.1
	6	1830		34	90				1655
	10	1915		46	130	25	1666		12
	16	1930		58	160	35	1668		16
	25	1990		76	210	40	1684		17.5
1800	2.5	1990	1820	26	80	20	1845	16	7.1
	6	2045		36	100				1855
	10	2115		50	140	30	1866		15
	16	2130		62	170	35	1870		17.5
	25	2190		80	220	40	1884		17.5
2000	2.5	2190	2020	26	80	22	2045	16	7.1
	6	2265		38	110		25		2058
	10	2325		54	150	30	2070		16
	16	2345		66	190	40	2072		20
	25	2415		84	240	45	2084		17.5

Notes

- For drilling details see page 8-64.
- For tolerances see page 8-61.
- For facing types and dimensions see page 8-62.
- 1 To be specified by the purchaser.