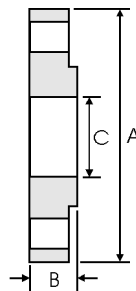
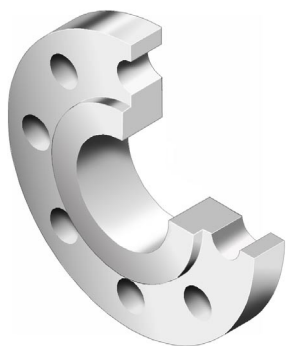


# Plate Flanges (Code 101) - BS 4504



DN	PN	A mm	B mm	C mm
10	2.5 & 6	75	12	18.0
	10 & 16	90	14	
	25 & 40	90	14	
15	2.5 & 6	80	12	22
	10 & 16	95	14	
	25 & 40	95	14	
20	2.5 & 6	90	14	27.5
	10 & 16	105	16	
	25 & 40	105	16	
25	2.5 & 6	100	14	34.5
	10 & 16	115	16	
	25 & 40	115	16	
32	2.5 & 6	120	16	43.5
	10 & 16	140	18	
	25 & 40	140	18	
40	2.5 & 6	130	16	49.5
	10 & 16	150	18	
	25 & 40	150	18	
50	2.5 & 6	140	16	61.5
	10 & 16	165	20	
	25 & 40	165	20	
65	2.5 & 6	160	16	77.5
	10 & 16	185	20	
	25 & 40	185	22	
80	2.5 & 6	190	18	90.5
	10 & 16	200	20	
	25 & 40	200	24	
100	2.5 & 6	210	18	116.0
	10 & 16	220	22	
	25 & 40	235	26	
125	2.5 & 6	240	20	141.5
	10 & 16	250	22	
	25 & 40	270	28	
150	2.5 & 6	265	20	170.5
	10 & 16	285	24	
	25 & 40	300	30	
200	2.5 & 6	320	22	221.5
	10 & 16	340	24	
	25	360	32	
	40	375	36	
250	2.5 & 6	375	24	276.5
	10	395	26	
	16	405	29	
	25	425	35	
40	450	42		

DN	PN	A mm	B mm	C mm
300	2.5 & 6	440	24	327.5
	10	445	26	
	16	460	32	
	25	485	38	
350	40	515	48	359.5
	2.5 & 6	490	26	
	10	505	28	
	16	520	35	
400	25	555	42	411.0
	40	580	54	
	2.5 & 6	540	28	
	10	565	32	
450	16	580	38	462.0
	25	620	46	
	40	660	60	
	2.5 & 6	595	30	
500	10	615	36	513.5
	16	640	42	
	25	670	50	
	40	685	66	
600	2.5 & 6	645	30	616.5
	10	670	38	
	16	715	46	
	25	730	56	
700	40	755	72	To be specified by purchaser
	2.5 & 6	755	32	
	10	780	42	
	16	840	52	
800	25	845	68	To be specified by purchaser
	40	890	84	
900	2.5	860	36	To be specified by purchaser
1000	2.5	975	38	
1200	2.5	1075	40	
1400	2.5	1175	42	
1600	2.5	1375	44	
1800	2.5	1575	48	
2000	2.5	1790	51	
	2.5	1990	54	
	2.5	2190	58	

**Notes**

- Dimension B is the flange thickness with or without a raised face.
- For drilling details see page 8-64.
- For tolerances see page 8-61.
- For facing types and dimensions see page 8-62.