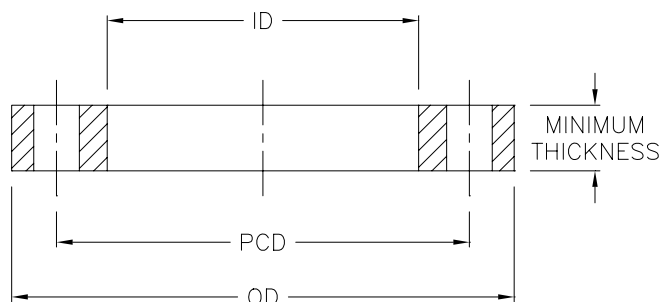


Table 4: STEEL BACKING FLANGES
AS/NZS 4331.1 (ISO 7005-1) – Table 10
PN10



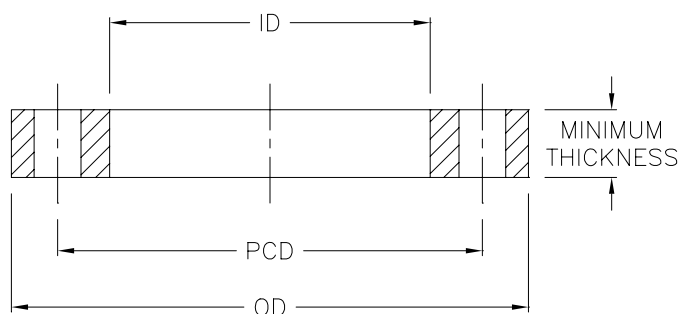
Nominal Pipe OD	Flange Size	OD	ID	Minimum Thickness	PCD	Bolt Hole No. x Dia.	Bolt Size
20	15						
25	20						
32	25						
40	32						
50	40						
63	50						
75	65						
90	80						
110	100						
125	100						
140	125						
160	150						
180	150						
200	200	340	235	24	295	8X22	M20
225	200	340	238	24	295	8X22	M20
250	250	395	288	26	350	12X22	M20
280	250	395	294	26	350	12X22	M20
315	300	445	338	28	400	12X22	M20
355	350	505	376	30	460	16X22	M20
400	400	565	430	32	515	16X26	M24
450	450	615	470	35	565	20X26	M24
450	500	670	517	38	620	20X26	M24
500	500	670	533	38	620	20X26	M24
560	600	780	618	42	725	20X29.5	M27
630	600	780	645	42	725	20X29.5	M27
710	700	895	740	-	840	24X29.5	M27
800	800	1015	843	-	950	24X32.5	M30
900	900	1115	947	-	1050	28X32.5	M30
1000	1000	1230	1050	-	1160	28X35.5	M33

Refer Table 5

As per ISO 9624: "The inside diameter of the loose backing flange shall conform to the design of the flange adaptor. In some applications, values of the inside diameter of the loose backing flange differing from those given in the tables may be used."

<M DG<-B': @ B; 9G'!\ Hd.#k k '\ gZUb[Y'W'a '!Ya Uj'.gUY4 \ m dg\]b'Wb

Table 5: STEEL BACKING FLANGES
AS/NZS 4331.1 (ISO 7005-1) – Table 11
PN16



Nominal Pipe OD	Flange Size	OD	ID	Minimum Thickness	PCD	Bolt Hole No. x Dia.	Bolt Size
20	15	95	28	14	65	4X14	M12
25	20	105	34	16	75	4X14	M12
32	25	115	42	16	85	4X14	M12
40	32	140	51	18	100	4X18	M16
50	40	150	62	18	110	4X18	M16
63	50	165	78	20	125	4X18	M16
75	65	185	92	20	145	8X18	M16
90	80	200	108	20	160	8X18	M16
110	100	220	128	22	180	8X18	M16
125	100	220	135	22	180	8X18	M16
140	125	250	158	22	210	8X18	M16
160	150	285	178	24	240	8X22	M20
180	150	285	188	24	240	8X22	M20
200	200	340	235	26	295	12X22	M20
225	200	340	238	26	295	12X22	M20
250	250	405	288	28	355	12X26	M24
280	250	405	294	28	355	12X26	M24
315	300	460	338	32	410	12X26	M24
355	350	520	376	35	470	16X26	M24
400	400	580	430	38	525	16X29.5	M27
450	450	640	470	42	585	20X29.5	M27
500	500	715	533	46	650	20X32.5	M30
560	600	840	618	52	770	20X35.5	M33
630	600	840	645	52	770	20X35.5	M33
710	700	910	740	-	840	24X35.5	M33
800	800	1025	843	-	950	24X39	M36
900	900	1125	947	-	1050	28X39	M36
1000	1000	1255	1050	-	1170	28X42	M39

As per ISO 9624: "The inside diameter of the loose backing flange shall conform to the design of the flange adaptor. In some applications, values of the inside diameter of the loose backing flange differing from those given in the tables may be used."

<M DG<-B: © B; 9G!' \ Htd.#k k k '\ gZUb[Y'Wt'a '!'Ya Uj'.gUY4 \ m dg\]b'Wb