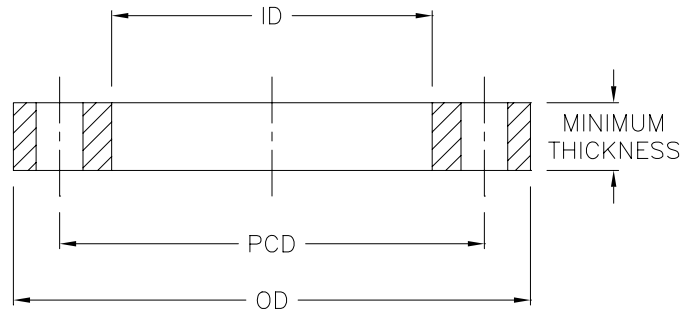


Table 6: STEEL BACKING FLANGES
AS 4087 - Figure B7
PN16



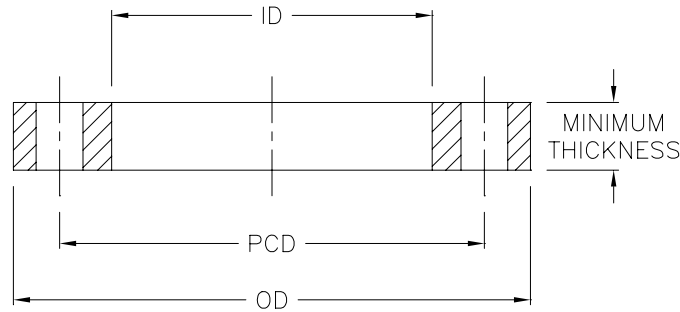
Nominal Pipe OD	Flange Size	OD	ID	Minimum Thickness	PCD	Bolt Hole No. x Dia.	Bolt Size
63	50	150	78	11	114	4X18	M16
75	65	165	92	11	127	4X18	M16
90	80	185	108	11	146	4X18	M16
110	100	215	128	13	178	4X18	M16
160	150	280	178	13	235	8X18	M16
200	200	335	235	19	292	8X18	M16
225	225	370	238	19	324	8X18	M16
250	250	405	288	19	356	8X22	M20
315	300	455	338	23	406	12X22	M20
355	350	525	376	30	470	12X26	M24
n/a	375	550	n/a	30	495	12X26	M24
400	400	580	430	30	521	12X26	M24
450	450	640	470	30	584	12X26	M24
500	500	705	533	38	641	16X26	M24
630	600	825	645	48	756	16X30	M27
710	700	910	740	56	845	20X30	M27
n/a	750	995	n/a	56	927	20X33	M30
800	800	1060	843	56	984	20X36	M33
900	900	1175	947	66	1092	24X36	M33
1000	1000	1255	1050	66	1175	24X36	M33

Note: This table has bolting compatibility with AS 2129 Table D flanges.

As per ISO 9624: "The inside diameter of the loose backing flange shall conform to the design of the flange adaptor. In some applications, values of the inside diameter of the loose backing flange differing from those given in the tables may be used."

<M DG<-B: © B; 9G!\ Hd.#k k k '\ gZUb[Y'Wt'a 'l'Ya Uj'.gUY4 \ m dg\]b'Wb

Table 7: STEEL BACKING FLANGES
AS 4087 - Figure B8
PN21



Nominal Pipe OD	Flange Size	OD	ID	Minimum Thickness	PCD	Bolt Hole No. x Dia.	Bolt Size
63	50	165	78	15	127	4X18	M16
75	65	185	92	15	146	8X18	M16
90	80	205	108	15	165	8X18	M16
110	100	230	128	19	191	8X18	M16
160	150	305	178	24	260	12X22	M20
200	200	370	235	24	324	12X22	M20
225	225	405	238	30	356	12X26	M24
250	250	430	288	30	381	12X26	M24
315	300	490	338	30	438	16X26	M24
355	350	550	376	30	495	16X30	M27
n/a	375	580	n/a	38	521	16X30	M27
400	400	610	430	38	552	20X30	M27
450	450	675	470	38	610	20X33	M30
500	500	735	533	48	673	24X33	M30
630	600	850	645	58	781	24X36	M33
710	700	935	740	58	857	24X36	M33
n/a	750	1015	n/a	58	940	28X36	M33
800	800	1060	843	68	984	28X36	M33
900	900	1185	947	68	1105	32X39	M36
1000	1000	1275	1050	78	1194	36X39	M36

Note: This table has bolting compatibility with AS 2129 Table F & H flanges.

As per ISO 9624: "The inside diameter of the loose backing flange shall conform to the design of the flange adaptor. In some applications, values of the inside diameter of the loose backing flange differing from those given in the tables may be used."

<M DG<-B': © B; 9G'!\ Htd.#k k k '\ gZUb[Y'W'a '!'Ya Uj'.gUY4 \ m dg\]b'Wb