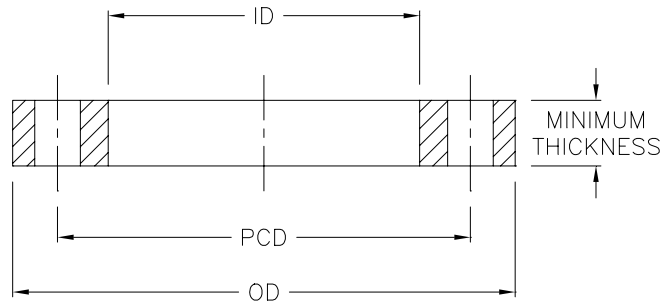


Table 1: STEEL BACKING FLANGES
AS 2129 : TABLE D

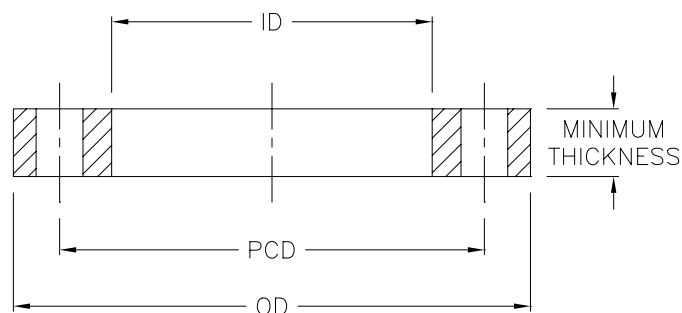


Nominal Pipe OD	Flange Size	OD	ID	Minimum Thickness	PCD	Bolt Hole No. x Dia.	Bolt Size
20	15	Refer to Table 2	Refer to Table 2	Refer to Table 2	Refer to Table 2	Refer to Table 2	Refer to Table 2
25	20						
32	25						
40	32						
50	40						
63	50						
75	65						
90	80						
110	100	215	128	10	178	4X18	M16
125	100	215	135	10	178	4X18	M16
125	125	255	140	13	210	8X18	M16
140	125	255	158	13	210	8X18	M16
160	150	280	178	13	235	8X18	M16
180	150	280	188	13	235	8X18	M16
200	200	335	235	13	292	8X18	M16
225	200	335	238	13	292	8X18	M16
250	250	405	288	16	356	8X22	M20
280	250	405	294	16	356	8X22	M20
315	300	455	338	19	406	12X22	M20
355	350	525	376	22	470	12X26	M24
400	400	580	430	22	521	12X26	M24
450	450	640	470	25	584	12X26	M24
500	500	705	533	29	641	16X26	M24
560	550	760	618	29	699	16X30	M27
630	600	825	645	32	756	16X30	M27
710	700	910	740	35	845	20X30	M27
800	800	1060	843	41	984	20X36	M33
900	900	1175	947	48	1092	24X36	M33
1000	1000	1255	1050	51	1175	24X36	M33

As per ISO 9624: "The inside diameter of the loose backing flange shall conform to the design of the flange adaptor. In some applications, values of the inside diameter of the loose backing flange differing from those given in the tables may be used."

<M DG<-B': © B; 9G'!\ Htd.#k k k '\ gZUb[Y'W'a '!Ya Uj'.gUY4 \ mi dgl]b'Wb

Table 2: STEEL BACKING FLANGES
AS 2129 : TABLE E



Nominal Pipe OD	Flange Size	OD	ID	Minimum Thickness	PCD	Bolt Hole No. x Dia.	Bolt Size
20	15	95	28	6	67	4X14	M12
25	20	100	34	6	73	4X14	M12
32	25	115	42	7	83	4X14	M12
40	32	120	51	8	87	4X14	M12
50	40	135	62	9	98	4X14	M12
63	50	150	78	10	114	4X18	M16
75	65	165	92	10	127	4X18	M16
90	80	185	108	11	146	4X18	M16
110	100	215	128	13	178	8X18	M16
125	100	215	135	13	178	8X18	M16
125	125	255	140	14	210	8X18	M16
140	125	255	158	14	210	8X18	M16
160	150	280	178	17	235	8X22	M20
180	150	280	188	17	235	8X22	M20
200	200	335	235	19	292	8X22	M20
225	200	335	238	19	292	8X22	M20
250	250	405	288	22	356	12X22	M20
280	250	405	294	22	356	12X22	M20
315	300	455	338	25	406	12X26	M24
355	350	525	376	29	470	12X26	M24
400	400	580	430	32	521	12X26	M24
450	450	640	470	35	584	16X26	M24
500	500	705	533	38	641	16X26	M24
560	550	760	618	44	699	16X30	M27
630	600	825	645	48	756	16X33	M30
710	700	910	740	51	845	20X33	M30
800	800	1060	843	54	984	20X36	M33
900	900	1175	947	64	1092	24X36	M33
1000	1000	1255	1050	67	1175	24X39	M36

As per ISO 9624: "The inside diameter of the loose backing flange shall conform to the design of the flange adaptor. In some applications, values of the inside diameter of the loose backing flange differing from those given in the tables may be used."

<M DG<-B': @B; 9G'!\ Hfd.#k k k '\ gZUb[Y'Wta '!\Ya U]. 'gUY4 \ mi dg\ Jb'Vb