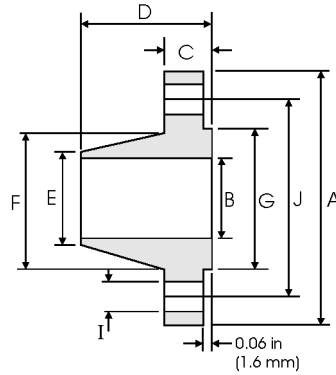


Weld Neck Flanges - ANSI B16.5



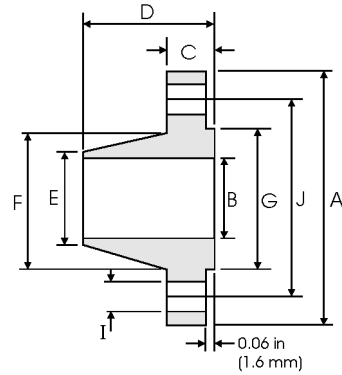
Class 150 lb

Pipe		Flange Data				Hub Data		Raised Face	Drilling Data			Weight
Nominal Pipe Size		A	B	C	D	E	F	G	H	I	J	
	Outside Diameter	Overall Diameter	Inside Diameter	Flange Thickness min	Overall Length	Diameter at Weld Bevel	Hub Diameter	Face Diameter	Number of Holes	Bolt Hole Diameter	Diameter of Circle of Holes	kg/ piece
	in mm	in mm	in mm	in mm	in mm	in mm	in mm	in mm				
1/2	0.840	3.500	0.620	0.440	1.880	0.840	1.190	1.380	4	0.620	2.380	0.48
	21.30	88.90	15.70	11.20	47.80	21.30	30.20	35.00				
3/4	1.050	3.880	0.820	0.500	2.060	1.050	1.500	1.690	4	0.620	2.750	0.71
	26.70	98.60	20.80	12.70	52.30	26.70	38.10	42.90				
1	1.315	4.250	1.050	0.560	2.190	1.320	1.940	2.000	4	0.620	3.120	1.01
	33.40	108.0	26.70	14.20	55.60	33.50	49.30	50.80				
1 1/4	1.660	4.620	1.380	0.620	2.250	1.660	2.310	2.500	4	0.620	3.500	1.33
	42.20	117.3	35.10	15.70	57.15	42.20	58.70	63.50				
1 1/2	1.900	5.000	1.610	0.690	2.440	1.900	2.560	2.880	4	0.620	3.880	1.72
	48.30	127.0	40.90	17.50	62.00	48.30	65.00	73.15				
2	2.375	6.000	2.070	0.750	2.500	2.380	3.060	3.620	4	0.750	4.750	2.58
	60.30	152.4	52.60	19.10	63.50	60.45	77.70	91.90				
2 1/2	2.875	7.000	2.470	0.880	2.750	2.880	3.560	4.120	4	0.750	5.500	4.11
	73.00	177.8	62.70	22.40	69.85	73.15	90.40	104.6				
3	3.500	7.500	3.070	0.940	2.750	3.500	4.250	5.000	4	0.750	6.000	4.92
	88.90	190.5	78.00	23.90	69.85	88.90	108.0	127.0				
3 1/2	4.000	8.500	3.550	0.940	2.810	4.000	4.810	5.500	8	0.750	7.000	6.08
	101.6	215.9	90.20	23.90	71.40	101.6	122.2	139.7				
4	4.500	9.000	4.030	0.940	3.000	4.500	5.310	6.190	8	0.750	7.500	6.84
	114.3	228.6	102.4	23.90	76.20	114.3	134.9	157.2				
5	5.563	10.00	5.050	0.940	3.500	5.560	6.440	7.310	8	0.880	8.500	8.56
	141.3	254.0	128.3	23.90	88.90	141.2	163.6	185.7				
6	6.625	11.00	6.070	1.000	3.500	6.630	7.560	8.500	8	0.880	9.500	10.6
	168.3	279.4	154.2	25.40	88.90	168.4	192.0	215.9				
8	8.625	13.50	7.980	1.120	4.000	8.630	9.690	10.62	8	0.880	11.75	17.6
	219.1	342.9	202.7	28.40	101.6	219.2	246.1	269.7				
10	10.75	16.00	10.02	1.190	4.000	10.75	12.00	12.75	12	1.000	14.25	24.0
	273.0	406.4	254.5	30.20	101.6	273.0	304.8	323.8				
12	12.75	19.00	12.00	1.250	4.500	12.75	14.38	15.00	12	1.000	17.00	36.5
	323.8	482.6	304.8	31.75	114.3	323.8	365.3	381.0				
14	14.00	21.00		1.380	5.000	14.00	15.75	16.25	12	1.120	18.75	48.4
	355.6	533.4		35.10	127.0	355.6	400.1	412.7				
16	16.00	23.50		1.440	5.000	16.00	18.00	18.50	16	1.120	21.25	60.6
	406.4	596.9		36.60	127.0	406.4	475.2	469.9				
18	18.00	25.00		1.560	5.500	18.00	19.88	21.00	16	1.250	22.75	68.3
	457.2	635.0		39.60	139.7	457.2	505.0	533.4				
20	20.00	27.50		1.690	5.690	20.00	22.00	23.00	20	1.250	25.00	84.5
	508.0	698.5		42.90	144.5	508.0	558.8	584.2				
24	24.00	32.00		1.880	6.000	24.00	26.12	27.25	20	1.380	29.50	115
	609.6	812.8		47.80	152.4	609.6	663.4	692.1				

Notes

- Dimension B corresponds to the pipe inside diameter. Values quoted assume 40S/Standard wall thickness.
- Weights are based on manufacturer's data and are approximate.
- Flat face flanges may be provided at full thickness, C, or with raised face removed (the latter is nonstandard).
- For ring joint facings see page 8-6. For weld end bevel see page 8-5.
- For tolerances see page 8-4.

Weld Neck Flanges - ANSI B16.5



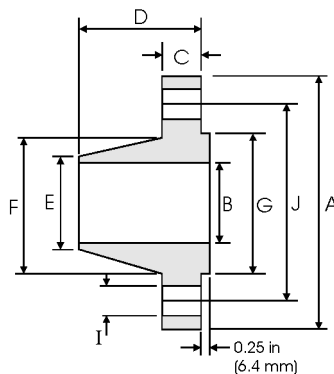
Class 300 lb

Nominal Pipe Size	Pipe		Flange Data				Hub Data		Raised Face	Drilling Data			Weight
	Outside Diameter	Overall Diameter	Inside Diameter	Flange Thickness min	Overall Length	Diameter at Weld Bevel	Hub Diameter	Face Diameter	Number of Holes	Bolt Hole Diameter	Diameter of Circle of Holes	kg/ piece	
													A
1/2	0.840	3.750	0.620	0.560	2.060	0.840	1.500	1.380	4	0.620	2.620	0.75	
	21.30	95.20	15.70	14.20	52.30	21.30	38.10	35.00		15.70	66.55		
3/4	1.050	4.620	0.820	0.620	2.250	1.050	1.880	1.690	4	0.750	3.250	1.26	
	26.70	117.3	20.80	15.70	57.15	26.70	47.70	42.90		19.00	82.50		
1	1.315	4.880	1.050	0.690	2.440	1.320	2.120	2.000	4	0.750	3.500	1.52	
	33.40	123.9	26.70	17.50	62.00	33.50	53.80	50.80		19.00	88.90		
1 1/4	1.660	5.250	1.380	0.750	2.560	1.660	2.500	2.500	4	0.750	3.880	2.03	
	42.20	133.3	35.10	19.00	65.00	42.20	63.50	63.50		19.00	98.50		
1 1/2	1.900	6.120	1.610	0.810	2.690	1.900	2.750	2.880	4	0.880	4.500	2.89	
	48.30	155.4	40.90	20.60	68.30	48.30	69.85	73.15		22.30	114.3		
2	2.375	6.500	2.070	0.880	2.750	2.380	3.310	3.620	8	0.750	5.000	3.40	
	60.30	165.1	52.60	22.30	69.85	60.45	84.00	91.90		19.00	127.0		
2 1/2	2.875	7.500	2.470	1.000	3.000	2.880	3.940	4.120	8	0.880	5.880	5.17	
	73.00	190.5	62.70	25.40	76.20	73.15	100.0	104.6		22.30	149.3		
3	3.500	8.250	3.070	1.120	3.120	3.500	4.620	5.000	8	0.880	6.620	6.93	
	88.90	209.5	78.00	28.40	79.25	88.90	117.3	127.0		22.30	168.1		
3 1/2	4.000	9.000	3.550	1.190	3.190	4.000	5.250	5.500	8	0.880	7.250	8.67	
	101.6	228.6	90.20	30.20	81.00	101.6	133.3	139.7		22.30	184.1		
4	4.500	10.00	4.030	1.250	3.380	4.500	5.750	6.190	8	0.880	7.880	11.2	
	114.3	254.0	102.4	31.70	85.80	114.3	146.0	157.2		22.30	200.1		
5	5.563	11.00	5.050	1.380	3.880	5.560	7.000	7.310	8	0.880	9.250	15.1	
	141.3	279.4	128.3	35.00	98.50	141.2	177.8	185.7		22.30	234.9		
6	6.625	12.50	6.070	1.440	3.880	6.630	8.120	8.500	12	0.880	10.62	19.1	
	168.3	317.5	154.2	36.50	98.50	168.4	206.2	215.9		22.30	269.7		
8	8.625	15.00	7.980	1.620	4.380	8.630	10.25	10.62	12	1.000	13.00	29.9	
	219.1	381.0	202.7	41.10	111.2	219.2	260.3	269.7		25.40	330.2		
10	10.75	17.50	10.02	1.880	4.620	10.75	12.62	12.75	16	1.120	15.25	42.7	
	273.0	444.5	254.5	47.70	117.3	273.0	320.5	323.8		28.40	387.3		
12	12.75	20.50	12.00	2.000	5.120	12.75	14.75	15.00	16	1.250	17.75	61.8	
	323.8	520.7	304.8	50.80	130.0	323.8	374.6	381.0		31.70	450.8		
14	14.00	23.00	304.8	2.120	5.620	14.00	16.75	16.25	20	1.250	20.25	85.8	
	355.6	584.2		53.80	142.7	355.6	425.4	412.7		31.70	514.3		
16	16.00	25.50	304.8	2.250	5.750	16.00	19.00	18.50	20	1.380	22.50	106	
	406.4	647.7		57.15	146.0	406.4	482.6	469.9		35.00	571.5		
18	18.00	28.00	304.8	2.380	6.250	18.00	21.00	21.00	24	1.380	24.75	131	
	457.2	711.2		60.45	158.7	457.2	533.4	533.4		35.00	628.6		
20	20.00	30.50	304.8	2.500	6.380	20.00	23.12	23.00	24	1.380	27.00	158	
	508.0	774.7		63.50	162.0	508.0	587.2	584.2		35.00	685.8		
24	24.00	36.00	304.8	2.750	6.620	24.00	27.62	27.25	24	1.620	32.00	230	
	609.6	914.4		69.85	168.1	609.6	701.5	692.1		41.10	812.8		

Notes

- Dimension B corresponds to the pipe inside diameter. Values quoted assume 40S/Standard wall thickness.
- Weights are based on manufacturer's data and are approximate.
- Flat face flanges may be provided at full thickness, C, or with raised face removed (the latter is nonstandard).
- For ring joint facings see page 8-6. For weld end bevel see page 8-5.
- For tolerances see page 8-4.

Weld Neck Flanges - ANSI B16.5



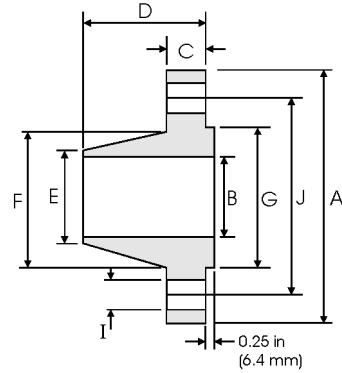
Class 400 lb

Pipe		Flange Data				Hub Data		Raised Face	Drilling Data			Weight
Nominal Pipe Size		A	B	C	D	E	F	G	H	I	J	
	Outside Diameter	Overall Diameter	Inside Diameter	Flange Thickness min	Overall Length	Diameter at Weld Bevel	Hub Diameter	Face Diameter	Number of Holes	Bolt Hole Diameter	Diameter of Circle of Holes	kg/ piece
	in mm	in mm	in mm	in mm	in mm	in mm	in mm	in mm		in mm	in mm	
1/2	0.840	3.750	To be specified by Purchaser	0.560	2.060	0.840	1.500	1.380	4	0.620	2.620	0.87
	21.30	95.30		14.20	52.30	21.30	38.10	35.00		15.70	66.55	
3/4	1.050	4.620		0.620	2.250	1.050	1.880	1.690	4	0.750	3.250	1.45
	26.70	117.3		15.70	57.15	26.70	47.80	42.90		19.10	82.60	
1	1.315	4.880		0.690	2.440	1.320	2.120	2.000	4	0.750	3.500	1.76
	33.40	124.0		17.50	62.00	33.50	53.80	50.80		19.10	88.90	
1 1/4	1.660	5.250		0.810	2.620	1.660	2.500	2.500	4	0.750	3.880	2.49
	42.20	133.4		20.60	66.55	42.20	63.50	63.50		19.10	98.60	
1 1/2	1.900	6.120		0.880	2.750	1.900	2.750	2.880	4	0.880	4.500	3.49
	48.30	155.4		22.40	69.85	48.30	69.85	73.15		22.40	114.3	
2	2.375	6.500		1.000	2.880	2.380	3.310	3.620	8	0.750	5.000	4.36
	60.30	165.1		25.40	73.15	60.45	84.10	91.90		19.10	127.0	
2 1/2	2.875	7.500		1.120	3.120	2.880	3.940	4.120	8	0.880	5.880	6.43
	73.00	190.5		28.40	79.25	73.15	100.1	104.6		22.40	149.4	
3	3.500	8.250		1.250	3.250	3.500	4.620	5.000	8	0.880	6.620	8.53
	88.90	209.6		31.75	82.60	88.90	117.3	127.0		22.40	168.1	
3 1/2	4.000	9.000		1.380	3.380	4.000	5.250	5.500	8	1.000	7.250	10.7
	101.6	228.6		35.10	85.90	101.6	133.4	139.7		25.40	184.2	
4	4.500	10.00		1.380	3.500	4.500	5.750	6.190	8	1.000	7.880	12.8
	114.3	254.0		35.10	88.90	114.3	146.1	157.2		25.40	200.2	
5	5.563	11.00	1.500	4.000	5.560	7.000	7.310	8	1.000	9.250	16.9	
	141.3	279.4	38.10	101.6	141.2	177.8	185.7		25.40	235.0		
6	6.625	12.50	1.620	4.060	6.630	8.120	8.500	12	1.000	10.62	22.0	
	168.3	317.5	41.10	103.1	168.4	206.2	215.9		25.40	269.7		
8	8.625	15.00	1.880	4.620	8.630	10.25	10.62	12	1.120	13.00	34.7	
	219.1	381.0	47.80	117.3	219.2	260.4	269.7		28.40	330.2		
10	10.75	17.50	2.120	4.880	10.75	12.62	12.75	16	1.250	15.25	48.5	
	273.0	444.5	53.80	124.0	273.0	320.5	323.8		31.75	387.4		
12	12.75	20.50	2.250	5.380	12.75	14.75	15.00	16	1.380	17.75	69.6	
	323.8	520.7	57.15	136.7	323.8	374.7	381.0		35.10	450.9		
14	14.00	23.00	2.380	5.880	14.00	16.75	16.25	20	1.380	20.25	95.5	
	355.6	584.2	60.45	149.4	355.6	425.5	412.7		35.10	514.4		
16	16.00	25.50	2.500	6.000	16.00	19.00	18.50	20	1.500	22.50	118	
	406.4	647.7	63.50	152.4	406.4	482.6	469.9		38.10	571.5		
18	18.00	28.00	2.620	6.500	18.00	21.00	21.00	24	1.500	24.75	145	
	457.2	711.2	66.55	165.1	457.2	533.4	533.4		38.10	628.7		
20	20.00	30.50	2.750	6.620	20.00	23.12	23.00	24	1.620	27.00	173	
	508.0	774.7	69.85	168.1	508.0	587.2	584.2		41.10	685.8		
24	24.00	36.00	3.000	6.880	24.00	27.62	27.25	24	1.880	32.00	249	
	609.6	914.4	76.20	174.8	609.6	701.5	692.1		47.80	812.8		

Notes

- Dimension B corresponds to the pipe inside diameter. Values quoted assume 40S/Standard wall thickness.
- Weights are based on manufacturer's data and are approximate.
- For ring joint facings see page 8-6. For weld end bevel see page 8-5.
- For tolerances see page 8-4.

Weld Neck Flanges - ANSI B16.5



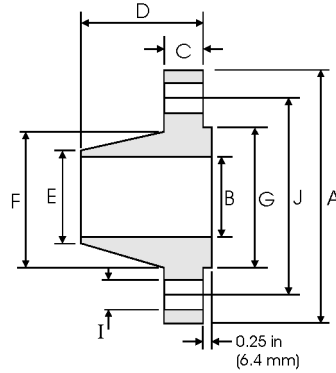
Class 600 lb

Nominal Pipe Size	Pipe		Flange Data				Hub Data		Raised Face	Drilling Data			Weight
	Outside Diameter	Overall Diameter	A	B	C	D	E	F	G	H	I	J	kg/ piece
1/2	0.840	3.750	To be specified by Purchaser	0.560	2.060	0.840	1.500	1.380	4	0.620	2.620	0.87	
	21.30	95.30		14.20	52.30	21.30	38.10	35.00		15.70	66.55		
3/4	1.050	4.620		0.620	2.250	1.050	1.880	1.690	4	0.750	3.250	1.45	
	26.70	117.3		15.70	57.15	26.70	47.80	42.90		19.10	82.60		
1	1.315	4.880		0.690	2.440	1.320	2.120	2.000	4	0.750	3.500	1.76	
	33.40	124.0		17.50	62.00	33.50	53.80	50.80		19.10	88.90		
1 1/4	1.660	5.250		0.810	2.620	1.660	2.500	2.500	4	0.750	3.880	2.49	
	42.20	133.4		20.60	66.55	42.20	63.50	63.50		19.10	98.60		
1 1/2	1.900	6.120		0.880	2.750	1.900	2.750	2.880	4	0.880	4.500	3.49	
	48.30	155.4		22.40	69.85	48.30	69.85	73.15		22.40	114.3		
2	2.375	6.500		1.000	2.880	2.380	3.310	3.620	8	0.750	5.000	4.36	
	60.30	165.1		25.40	73.15	60.45	84.10	91.90		19.10	127.0		
2 1/2	2.875	7.500		1.120	3.120	2.880	3.940	4.120	8	0.880	5.880	6.43	
	73.00	190.5		28.40	79.25	73.15	100.1	104.6		22.40	149.4		
3	3.500	8.250		1.250	3.250	3.500	4.620	5.000	8	0.880	6.620	8.53	
	88.90	209.6		31.75	82.60	88.90	117.3	127.0		22.40	168.1		
3 1/2	4.000	9.000		1.380	3.380	4.000	5.250	5.500	8	1.000	7.250	10.7	
	101.6	228.6		35.10	85.90	101.6	133.4	139.7		25.40	184.2		
4	4.500	10.75		1.500	4.000	4.500	6.000	6.190	8	1.000	8.500	17.4	
	114.3	273.1		38.10	101.6	114.3	152.4	157.2		25.40	215.9		
5	5.563	13.00	1.750	4.500	5.560	7.440	7.310	8	1.120	10.50	29.2		
	141.3	330.2	44.50	114.3	141.2	189.0	185.7		28.40	266.7			
6	6.625	14.00	1.880	4.620	6.630	8.750	8.500	12	1.120	11.50	34.9		
	168.3	355.6	47.80	117.3	168.4	222.3	215.9		28.40	292.1			
8	8.625	16.50	2.190	5.250	8.630	10.75	10.62	12	1.250	13.75	53.9		
	219.1	419.1	55.60	133.4	219.2	273.1	269.7		31.75	349.3			
10	10.75	20.00	2.500	6.000	10.75	13.50	12.75	16	1.380	17.00	86.5		
	273.0	508.0	63.50	152.4	273.0	342.9	323.8		35.10	431.8			
12	12.75	22.00	2.620	6.120	12.75	15.75	15.00	20	1.380	19.25	103		
	323.8	558.8	66.55	155.4	323.8	400.1	381.0		35.10	489.0			
14	14.00	23.75	2.750	6.500	14.00	17.00	16.25	20	1.500	20.75	122		
	355.6	603.3	69.85	165.1	355.6	431.8	412.7		38.10	527.1			
16	16.00	27.00	3.000	7.000	16.00	19.50	18.50	20	1.620	23.75	170		
	406.4	685.8	76.20	177.8	406.4	495.3	469.9		41.10	603.3			
18	18.00	29.25	3.250	7.250	18.00	21.50	21.00	20	1.750	25.75	204		
	457.2	743.0	82.60	184.2	457.2	546.1	533.4		44.50	654.1			
20	20.00	32.00	3.500	7.500	20.00	24.00	23.00	24	1.750	28.50	254		
	508.0	812.8	88.90	190.5	508.0	609.6	584.2		44.50	723.9			
24	24.00	37.00	4.000	8.000	24.00	28.25	27.25	24	2.000	33.00	358		
	609.6	939.8	101.6	203.2	609.6	717.6	692.1		50.80	838.2			



Notes

- Dimension B corresponds to the pipe inside diameter. Values quoted assume 40S/Standard wall thickness.
- Weights are based on manufacturer's data and are approximate.
- For ring joint facings see page 8-6. For weld end bevel see page 8-5.
- For tolerances see page 8-4.

Weld Neck Flanges - ANSI B16.5



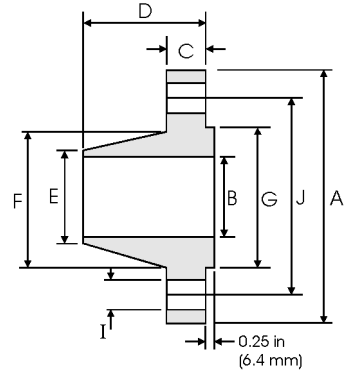
Class 900 lb

Pipe		Flange Data				Hub Data		Raised Face	Drilling Data			Weight
Nominal Pipe Size		A	B	C	D	E	F	G	H	I	J	
	Outside Diameter	Overall Diameter	Inside Diameter	Flange Thickness min	Overall Length	Diameter at Weld Bevel	Hub Diameter	Face Diameter	Number of Holes	Bolt Hole Diameter	Diameter of Circle of Holes	kg/ piece
	in mm	in mm	in mm	in mm	in mm	in mm	in mm	in mm		in mm	in mm	
1/2	0.840	4.750	To be specified by Purchaser	0.880	2.380	0.840	1.500	1.380	4	0.880	3.250	1.87
	21.30	120.6		22.30	60.45	21.30	38.10	35.00		22.30	82.50	
3/4	1.050	5.120		1.000	2.750	1.050	1.750	1.690	4	0.880	3.500	2.56
	26.70	130.0		25.40	69.85	26.70	44.00	42.90		22.30	88.90	
1	1.315	5.880		1.120	2.880	1.320	2.060	2.000	4	1.000	4.000	3.74
	33.40	149.3		28.40	73.15	33.50	52.30	50.80		25.40	101.6	
1 1/4	1.660	6.250		1.120	2.880	1.660	2.500	2.500	4	1.000	4.380	4.33
	42.20	158.7		28.40	73.15	42.20	63.50	63.50		25.40	111.2	
1 1/2	1.900	7.000		1.250	3.250	1.900	2.750	2.880	4	1.120	4.880	5.94
	48.30	177.8		31.70	82.50	48.30	69.85	73.15		28.40	123.9	
2	2.375	8.500		1.500	4.000	2.380	4.120	3.620	8	1.000	6.500	10.8
	60.30	215.9		38.10	101.6	60.45	104.6	91.90		25.40	165.1	
2 1/2	2.875	9.620		1.620	4.120	2.880	4.880	4.120	8	1.120	7.500	15.0
	73.00	244.3		41.10	104.6	73.15	123.9	104.6		28.40	190.5	
3	3.500	9.500		1.500	4.000	3.500	5.000	5.000	8	1.000	7.500	13.7
	88.90	241.3		38.10	101.6	88.90	127.0	127.0		25.40	190.5	
4	4.500	11.50		1.750	4.500	4.500	6.250	6.190	8	1.250	9.250	22.5
	114.3	292.1		44.40	114.3	114.3	158.7	157.2		31.70	234.9	
5	5.563	13.75		2.000	5.000	5.560	7.500	7.310	8	1.380	11.00	37.4
	141.3	349.2		50.80	127.0	141.2	190.5	185.7		35.00	279.4	
6	6.625	15.00	2.190	5.500	6.630	9.250	8.500	12	1.250	12.50	47.7	
	168.3	381.0	55.60	139.7	168.4	234.9	215.9		31.70	317.5		
8	8.625	18.50	2.500	6.380	8.630	11.75	10.62	12	1.500	15.50	81.3	
	219.1	469.9	63.50	162.0	219.2	298.4	269.7		38.10	393.7		
10	10.75	21.50	2.750	7.250	10.75	14.50	12.75	16	1.500	18.50	119	
	273.0	546.1	69.85	184.1	273.0	368.3	323.8		38.10	469.9		
12	12.75	24.00	3.120	7.880	12.75	16.50	15.00	20	1.500	21.00	157	
	323.8	609.6	79.25	200.1	323.8	419.1	381.0		38.10	533.4		
14	14.00	25.25	3.380	8.380	14.00	17.75	16.25	20	1.620	22.00	180	
	355.6	641.3	85.80	212.8	355.6	450.8	412.7		41.10	558.8		
16	16.00	27.75	3.500	8.500	16.00	20.00	18.50	20	1.750	24.25	217	
	406.4	704.8	88.90	215.9	406.4	508.0	469.9		44.40	615.9		
18	18.00	31.00	4.000	9.000	18.00	22.25	21.00	20	2.000	27.00	292	
	457.2	787.4	101.6	228.6	457.2	565.1	533.4		50.80	685.8		
20	20.00	33.75	4.250	9.750	20.00	24.50	23.00	20	2.120	29.50	362	
	508.0	857.2	107.9	247.6	508.0	622.3	584.2		53.80	749.3		
24	24.00	41.00	5.500	11.50	24.00	29.50	27.25	20	2.620	35.50	665	
	609.6	1041.4	139.7	292.1	609.6	749.3	692.1		66.55	901.7		

Notes

- Dimension B corresponds to the pipe inside diameter. Values quoted assume 40S/Standard wall thickness.
- Weights are based on manufacturer's data and are approximate.
- For ring joint facings see page 8-6. For weld end bevel see page 8-5.
- For tolerances see page 8-4.

Weld Neck Flanges - ANSI B16.5



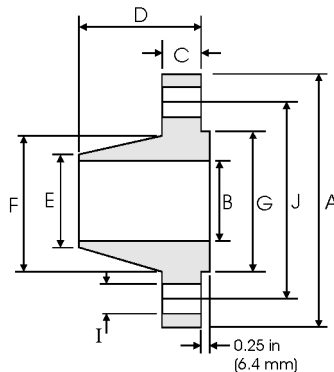
Class 1500 lb

Nominal Pipe Size	Pipe		Flange Data				Hub Data		Raised Face	Drilling Data			Weight
	Outside Diameter	Overall Diameter	A	B	C	D	E	F	G	H	I	J	kg/ piece
1/2	0.840	4.750	To be specified by Purchaser	0.880	2.380	0.840	1.500	1.380	4	0.880	3.250	1.87	
	21.30	120.6		22.30	60.45	21.30	38.10	35.00		22.30	82.50	2.56	
3/4	1.050	5.120		1.000	2.750	1.050	1.750	1.690	4	0.880	3.500	2.56	
	26.70	130.0		25.40	69.85	26.70	44.00	42.90		22.30	88.90		
1	1.315	5.880		1.120	2.880	1.320	2.060	2.000	4	1.000	4.000	3.74	
	33.40	149.3		28.40	73.15	33.50	52.30	50.80		25.40	101.6		
1 1/4	1.660	6.250		1.120	2.880	1.660	2.500	2.500	4	1.000	4.380	4.33	
	42.20	158.7		28.40	73.15	42.20	63.50	63.50		25.40	111.2		
1 1/2	1.900	7.000		1.250	3.250	1.900	2.750	2.880	4	1.120	4.880	5.94	
	48.30	177.8		31.70	82.50	48.30	69.85	73.15		28.40	123.9		
2	2.375	8.500		1.500	4.000	2.380	4.120	3.620	8	1.000	6.500	10.8	
	60.30	215.9		38.10	101.6	60.45	104.6	91.90		25.40	165.1		
2 1/2	2.875	9.620		1.620	4.120	2.880	4.880	4.120	8	1.120	7.500	15.0	
	73.00	244.3		41.10	104.6	73.15	123.9	104.6		28.40	190.5		
3	3.500	10.50		1.880	4.620	3.500	5.250	5.000	8	1.250	8.000	19.9	
	88.90	266.7		47.70	177.3	88.90	133.3	127.0		31.70	203.2		
4	4.500	12.25		2.120	4.880	4.500	6.380	6.190	8	1.380	9.500	29.9	
	114.3	311.1		53.80	123.9	114.3	162.0	157.2		35.00	241.3		
5	5.563	14.75		2.880	6.120	5.560	7.750	7.310	8	1.620	11.50	55.4	
	141.3	374.6		73.15	155.4	141.2	196.8	185.7		41.10	292.1		
6	6.625	15.50	3.250	6.750	6.630	9.000	8.500	12	1.500	12.50	68.4		
	168.3	393.7	82.50	171.4	168.4	228.6	215.9		38.10	317.5			
8	8.625	19.00	3.620	8.380	8.630	11.50	10.62	12	1.750	15.50	117		
	219.1	482.6	91.90	212.8	219.2	292.1	269.7		44.40	393.7			
10	10.75	23.00	4.250	10.00	10.75	14.50	12.75	12	2.000	19.00	194		
	273.0	584.2	107.9	254.0	273.0	368.3	323.8		50.80	482.6			
12	12.75	26.50	4.880	11.12	12.75	17.75	15.00	16	2.120	22.50	288		
	323.8	673.1	123.9	282.4	323.8	450.8	381.0		53.80	571.5			
14	14.00	29.50	5.250	11.75	14.00	19.50	16.25	16	2.380	25.00	380		
	355.6	749.3	133.3	298.4	355.6	495.3	412.7		60.45	635.0			
16	16.00	32.50	5.750	12.25	16.00	21.75	18.50	16	2.620	27.75	485		
	406.4	825.5	146.0	311.1	406.4	552.4	469.9		66.55	704.8			
18	18.00	36.00	6.380	12.88	18.00	23.50	21.00	16	2.880	30.50	644		
	457.2	914.4	162.0	327.1	457.2	596.9	533.4		73.15	774.7			
20	20.00	38.75	7.000	14.00	20.00	25.25	23.00	16	3.120	32.75	775		
	508.0	984.2	177.8	355.6	508.0	641.3	584.2		79.25	831.8			
24	24.00	46.00	8.000	16.00	24.00	30.00	27.25	16	3.620	39.00	1232		
	609.6	1168.4	203.2	406.4	609.6	762.0	692.1		91.90	990.6			

Notes

- Dimension B corresponds to the pipe inside diameter. Values quoted assume 40S/Standard wall thickness.
- Weights are based on manufacturer's data and are approximate.
- For ring joint facings see page 8-6. For weld end bevel see page 8-5.
- For tolerances see page 8-4.

Weld Neck Flanges - ANSI B16.5



Class 2500 lb

Nominal Pipe Size	Pipe		Flange Data				Hub Data		Raised Face	Drilling Data			Weight
	Outside Diameter	Overall Diameter	Inside Diameter	Flange Thickness min	Overall Length	Diameter at Weld Bevel	Hub Diameter	Face Diameter	Number of Holes	Bolt Hole Diameter	Diameter of Circle of Holes	kg/ piece	
in mm	in mm	in mm	in mm	in mm	in mm	in mm	in mm	in mm		in mm	in mm		
1/2	0.840	5.250	To be specified by Purchaser	1.190	2.880	0.840	1.690	1.380	4	0.880	3.500	3.12	
	21.30	133.4		30.20	73.15	21.30	42.90	35.00		22.40	88.90		
3/4	1.050	5.500		1.250	3.120	1.050	2.000	1.690	4	0.880	3.750	3.70	
	26.70	139.7		31.75	79.25	26.70	50.80	42.90		22.40	95.30		
1	1.315	6.250		1.380	3.500	1.320	2.250	2.000	4	1.000	4.250	5.24	
	33.40	158.8		35.10	88.90	33.50	57.15	50.80		25.40	108.0		
1 1/4	1.660	7.250		1.500	3.750	1.660	2.880	2.500	4	1.120	5.120	7.74	
	42.20	184.2		38.10	95.30	42.20	73.15	63.50		28.40	130.0		
1 1/2	1.900	8.000		1.750	4.380	1.900	3.120	2.880	4	1.250	5.750	10.9	
	48.30	203.2		44.50	111.3	48.30	79.25	73.15		31.75	146.1		
2	2.375	9.250		2.000	5.000	2.380	3.750	3.620	8	1.120	6.750	16.2	
	60.30	235.0		50.80	127.0	60.45	95.30	91.90		28.40	171.5		
2 1/2	2.875	10.50	2.250	5.620	2.880	4.500	4.120	8	1.250	7.750	23.7		
	73.00	266.7	57.15	142.7	73.15	114.3	104.6		31.75	196.9			
3	3.500	12.00	2.620	6.620	3.500	5.250	5.000	8	1.380	9.000	36.2		
	88.90	304.8	66.55	168.1	88.90	133.4	127.0		35.10	228.6			
4	4.500	14.00	3.000	7.500	4.500	6.500	6.190	8	1.620	10.75	55.3		
	114.3	355.6	76.20	190.5	114.3	165.1	157.2		41.10	273.1			
5	5.563	16.50	3.620	9.000	5.560	8.000	7.310	8	1.880	12.75	92.5		
	141.3	419.1	91.90	228.6	141.2	203.2	185.7		47.80	323.9			
6	6.625	19.00	4.250	10.75	6.630	9.250	8.500	8	2.120	14.50	143		
	168.3	482.6	108.0	273.1	168.4	235.0	215.9		53.80	368.3			
8	8.625	21.75	5.000	12.50	8.630	12.00	10.62	12	2.120	17.25	215		
	219.1	552.5	127.0	317.5	219.2	304.8	269.7		53.80	438.2			
10	10.75	26.50	6.500	16.50	10.75	14.75	12.75	12	2.620	21.25	406		
	273.0	673.1	165.1	419.1	273.0	374.7	323.8		66.55	539.8			
12	12.75	30.00	7.250	18.25	12.75	17.38	15.00	12	2.880	24.38	572		
	323.8	762.0	184.2	463.6	323.8	441.5	381.0		73.15	619.3			

Notes

- Dimension B corresponds to the pipe inside diameter. Values quoted assume 40S/Standard wall thickness.
- Weights are based on manufacturer's data and are approximate.
- For ring joint facings see page 8-6. For weld end bevel see page 8-5.
- For tolerances see page 8-4.