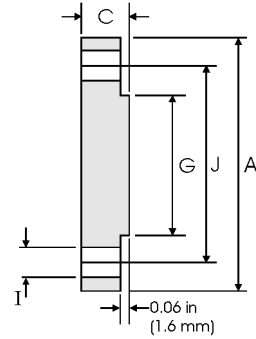
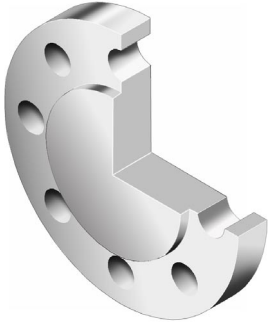


# Blind Flanges - ANSI B16.5



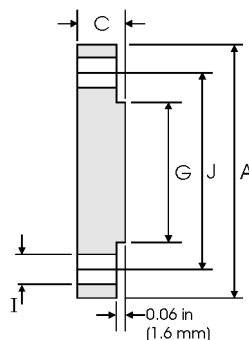
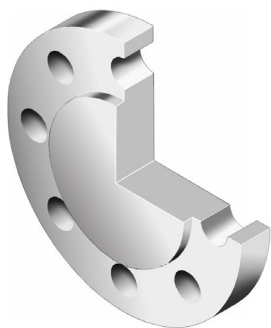
## Class 150 lb

Nominal Pipe Size	Pipe	Flange Data			Raised Face	Drilling Data			Weight
		<b>A</b>	<b>C</b>	<b>G</b>	<b>H</b>	<b>I</b>	<b>J</b>		
	Outside Diameter	Overall Diameter	Flange Thickness min	Face Diameter	Number of Holes	Bolt Hole Diameter	Diameter of Circle of Holes	kg/piece	
	in mm	in mm	in mm	in mm		in mm	in mm		
1/2	0.840	3.500	0.440	1.380	4	0.620	2.380	0.42	
	21.30	88.90	11.20	35.10		15.70	60.45		
3/4	1.050	3.880	0.500	1.690	4	0.620	2.750	0.61	
	26.70	98.60	12.70	42.90		15.70	69.85		
1	1.315	4.250	0.560	2.000	4	0.620	3.120	0.86	
	33.40	108.0	14.20	50.80		15.70	79.25		
1 1/4	1.660	4.620	0.620	2.500	4	0.620	3.500	1.17	
	42.20	117.3	15.70	63.50		15.70	88.90		
1 1/2	1.900	5.000	0.690	2.880	4	0.620	3.880	1.53	
	48.30	127.0	17.50	73.15		15.70	98.60		
2	2.375	6.000	0.750	3.620	4	0.750	4.750	2.42	
	60.30	152.4	19.10	91.90		19.10	120.7		
2 1/2	2.875	7.000	0.880	4.120	4	0.750	5.500	3.94	
	73.00	177.8	22.40	104.6		19.10	139.7		
3	3.500	7.500	0.940	5.000	4	0.750	6.000	4.93	
	88.90	190.5	23.90	127.0		19.10	152.4		
3 1/2	4.000	8.500	0.940	5.500	8	0.750	7.000	6.17	
	101.6	215.9	23.90	139.7		19.10	177.8		
4	4.500	9.000	0.940	6.190	8	0.750	7.500	7.00	
	114.3	228.6	23.90	157.2		19.10	190.5		
5	5.563	10.00	0.940	7.310	8	0.880	8.500	8.63	
	141.3	254.0	23.90	185.7		22.40	215.9		
6	6.625	11.00	1.000	8.500	8	0.880	9.500	11.3	
	168.3	279.4	25.40	215.9		22.40	241.3		
8	8.625	13.50	1.120	10.62	8	0.880	11.75	19.6	
	219.1	342.9	28.40	269.7		22.40	298.5		
10	10.75	16.00	1.190	12.75	12	1.000	14.25	28.8	
	273.0	406.4	30.20	323.9		25.40	362.0		
12	12.75	19.00	1.250	15.00	12	1.000	17.00	43.2	
	323.8	482.6	31.75	381.0		25.40	431.8		
14	14.00	21.00	1.380	16.25	12	1.120	18.75	58.1	
	355.6	533.4	35.10	412.8		28.40	476.3		
16	16.00	23.50	1.440	18.50	16	1.120	21.25	76.0	
	406.4	596.9	36.60	469.9		28.40	539.8		
18	18.00	25.00	1.560	21.00	16	1.250	22.75	93.7	
	457.2	635.0	39.60	533.4		31.75	577.9		
20	20.00	27.50	1.690	23.00	20	1.250	25.00	122	
	508.0	698.5	42.90	584.2		31.75	635.0		
24	24.00	32.00	1.880	27.25	20	1.380	29.50	185	
	609.6	812.8	47.80	692.2		35.10	749.3		



**Notes**

- Weights are based on manufacturer's data and are approximate.
- Flat face flanges may be provided at full thickness, C, or with raised face removed (the latter is nonstandard).
- For ring joint facings see page 8-6.
- For tolerances see page 8-4.

# Blind Flanges - ANSI B16.5



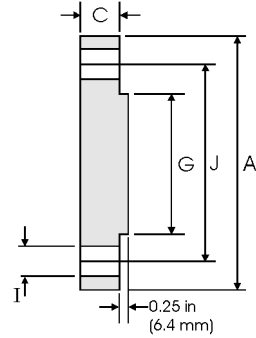
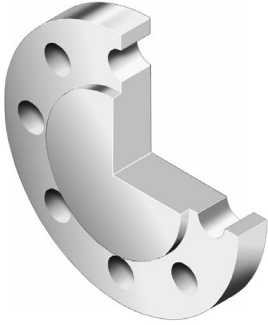
## Class 300 lb

Nominal Pipe Size	Pipe	Flange Data			Raised Face	Drilling Data		Weight
		<b>A</b>	<b>C</b>	<b>G</b>	<b>H</b>	<b>I</b>	<b>J</b>	
	Outside Diameter	Overall Diameter	Flange Thickness min	Face Diameter	Number of Holes	Bolt Hole Diameter	Diameter of Circle of Holes	kg/piece
	in mm	in mm	in mm	in mm		in mm	in mm	
1/2	0.840	3.750	0.560	1.380	4	0.620	2.620	0.64
	21.30	95.20	14.20	35.10		15.70	66.55	
3/4	1.050	4.620	0.620	1.690	4	0.750	3.250	1.11
	26.70	117.3	15.70	42.90		19.00	82.50	
1	1.315	4.880	0.690	2.000	4	0.750	3.500	1.39
	33.40	123.9	17.50	50.80		19.00	88.90	
1 1/4	1.660	5.250	0.750	2.500	4	0.750	3.880	1.79
	42.20	133.3	19.00	63.50		19.00	98.50	
1 1/2	1.900	6.120	0.810	2.880	4	0.880	4.500	2.66
	48.30	155.4	20.60	73.15		22.3	114.3	
2	2.375	6.500	0.880	3.620	8	0.750	5.000	3.18
	60.30	165.1	22.30	91.90		19.10	127.0	
2 1/2	2.875	7.500	1.000	4.120	8	0.880	5.880	4.85
	73.00	190.5	25.40	104.6		22.30	1.493	
3	3.500	8.250	1.120	5.000	8	0.880	6.620	6.81
	88.90	209.5	28.40	127.0		22.30	168.1	
3 1/2	4.000	9.000	1.190	5.500	8	0.880	7.250	8.71
	101.6	228.6	30.20	139.7		22.30	184.1	
4	4.500	10.00	1.250	6.190	8	0.880	7.800	11.5
	114.3	254.0	31.70	157.2		22.30	200.1	
5	5.563	11.00	1.380	7.310	8	0.880	9.250	15.6
	141.3	279.4	35.00	185.7		22.30	234.9	
6	6.625	12.50	1.440	8.500	12	0.880	10.62	20.9
	168.3	317.5	36.50	215.9		22.30	269.7	
8	8.625	15.00	1.620	10.62	12	1.000	13.00	34.3
	219.1	381.0	41.10	269.7		25.40	330.2	
10	10.75	17.50	1.880	12.75	16	1.120	15.25	53.3
	273.0	444.5	47.70	323.9		28.40	387.3	
12	12.75	20.50	2.000	15.00	16	1.250	17.75	78.8
	323.8	520.7	50.80	381.0		31.70	450.8	
14	14.00	23.00	2.120	16.25	20	1.250	20.25	105
	355.6	584.2	53.80	412.8		31.70	514.3	
16	16.00	25.50	2.250	18.50	20	1.380	22.50	137
	406.4	647.7	57.15	469.9		35.00	571.5	
18	18.00	28.00	2.380	21.00	24	1.380	24.75	175
	457.2	711.2	60.45	533.4		35.00	628.6	
20	20.00	30.50	2.500	23.00	24	1.380	27.00	221
	508.0	774.7	63.50	584.2		35.00	685.8	
24	24.00	36.00	2.750	27.25	24	1.620	32.00	339
	609.6	914.4	69.85	692.2		41.10	812.8	

Notes

- Weights are based on manufacturer's data and are approximate.
- Flat face flanges may be provided at full thickness, C, or with raised face removed (the latter is nonstandard).
- For ring joint facings see page 8-6.
- For tolerances see page 8-4.

# Blind Flanges - ANSI B16.5



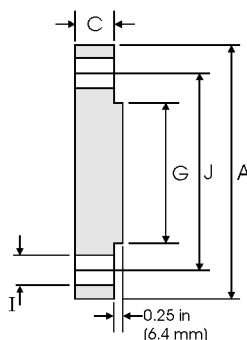
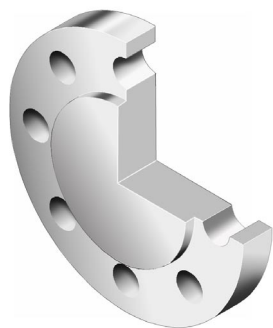
## Class 400 lb

Nominal Pipe Size	Pipe	Flange Data			Raised Face	Drilling Data			Weight
		<b>A</b>	<b>C</b>	<b>G</b>	<b>H</b>	<b>I</b>	<b>J</b>		
	Outside Diameter	Overall Diameter	Flange Thickness min	Face Diameter	Number of Holes	Bolt Hole Diameter	Diameter of Circle of Holes	kg/piece	
in mm	in mm	in mm	in mm	in mm		in mm			
1/2	0.840	3.750	0.560	1.380	4	0.620	2.620	0.76	
	21.30	95.20	14.20	35.10		15.70	66.55		
3/4	1.050	4.620	0.620	1.690	4	0.750	3.250	1.28	
	26.70	117.3	15.70	42.90		19.10	82.60		
1	1.315	4.880	0.690	2.000	4	0.750	3.500	1.60	
	33.40	123.9	17.50	50.80		19.10	88.90		
1 1/4	1.660	5.250	0.810	2.500	4	0.750	3.880	2.23	
	42.20	133.3	20.60	63.50		19.10	98.60		
1 1/2	1.900	6.120	0.880	2.880	4	0.880	4.500	3.25	
	48.30	155.4	22.30	73.15		22.40	114.3		
2	2.375	6.500	1.000	3.620	8	0.750	5.000	4.15	
	60.30	165.1	25.40	91.90		19.10	127.0		
2 1/2	2.875	7.500	1.120	4.120	8	0.880	5.880	6.13	
	73.00	190.5	28.40	104.6		22.40	149.4		
3	3.500	8.250	1.250	5.000	8	0.880	6.620	8.44	
	88.90	209.5	31.70	127.0		22.40	168.1		
3 1/2	4.000	9.000	1.380	5.500	8	1.000	7.250	11.0	
	101.6	228.6	35.00	139.7		25.40	184.2		
4	4.500	10.00	1.380	6.190	8	1.000	7.880	13.7	
	114.3	254.0	35.10	157.2		25.40	200.2		
5	5.563	11.00	1.500	7.310	8	1.000	9.250	18.5	
	141.3	279.4	38.10	185.7		25.40	235.0		
6	6.625	12.50	1.620	8.500	12	1.000	10.62	25.5	
	168.3	317.5	41.10	215.9		25.40	269.7		
8	8.625	15.00	1.880	10.62	12	1.120	13.00	42.6	
	219.1	381.0	47.80	269.7		28.40	330.2		
10	10.75	17.50	2.120	12.75	16	1.250	15.25	64.5	
	273.0	444.5	53.80	323.9		31.75	387.4		
12	12.75	20.50	2.250	15.00	16	1.380	17.75	94.30	
	323.8	520.7	57.15	381.0		35.10	450.9		
14	14.00	23.00	2.380	16.25	20	1.380	20.25	124	
	355.6	584.2	60.45	412.8		35.10	514.4		
16	16.00	25.50	2.500	18.50	20	1.500	22.50	162	
	406.4	647.7	63.50	469.9		38.10	571.5		
18	18.00	28.00	2.620	21.00	24	1.500	24.75	205	
	457.2	711.2	66.55	533.4		38.10	628.7		
20	20.00	30.50	2.750	23.00	24	1.620	27.00	254	
	508.0	774.7	69.85	584.2		41.10	685.8		
24	24.00	36.00	3.000	27.25	24	1.880	32.00	386	
	609.6	914.4	76.20	692.2		47.80	812.8		

Notes

- Weights are based on manufacturer's data and are approximate.
- For ring joint facings see page 8-6.
- For tolerances see page 8-4.

# Blind Flanges - ANSI B16.5



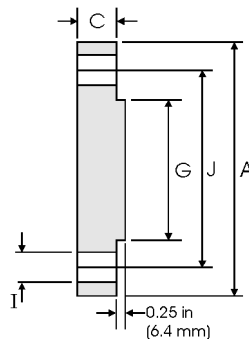
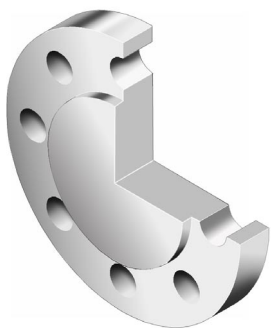
## Class 600 lb

Nominal Pipe Size	Pipe	Flange Data			Raised Face	Drilling Data		Weight
		<b>A</b>	<b>C</b>	<b>G</b>	<b>H</b>	<b>I</b>	<b>J</b>	
	Outside Diameter	Overall Diameter	Flange Thickness min	Face Diameter	Number of Holes	Bolt Hole Diameter	Diameter of Circle of Holes	kg/piece
	in mm	in mm	in mm	in mm		in mm	in mm	
1/2	0.840	3.750	0.560	1.380	4	0.620	2.620	0.76
	21.30	95.20	14.20	35.10		15.70	66.55	
3/4	1.050	4.620	0.620	1.690	4	0.750	3.250	1.28
	26.70	117.3	15.70	42.90		19.10	82.60	
1	1.315	4.880	0.690	2.000	4	0.750	3.500	1.60
	33.40	123.9	17.50	50.80		19.10	88.90	
1 1/4	1.660	5.250	0.810	2.500	4	0.750	3.880	2.23
	42.20	133.3	20.60	63.50		19.10	98.60	
1 1/2	1.900	6.120	0.880	2.880	4	0.880	4.500	3.25
	48.30	155.4	22.30	73.15		22.40	114.3	
2	2.375	6.500	1.000	3.620	8	0.750	5.000	4.15
	60.30	165.1	25.40	91.90		19.10	127.0	
2 1/2	2.875	7.500	1.120	4.120	8	0.880	5.880	6.13
	73.00	190.5	28.40	104.6		22.40	149.4	
3	3.500	8.250	1.250	5.000	8	0.880	6.620	8.44
	88.90	209.5	31.70	127.0		22.40	168.1	
3 1/2	4.000	9.000	1.380	5.500	8	1.000	7.250	11.0
	101.6	228.6	35.00	139.7		25.40	184.2	
4	4.500	10.75	1.500	6.190	8	1.000	8.500	17.3
	114.3	273.1	38.10	157.2		25.40	215.9	
5	5.563	13.00	1.750	7.310	8	1.120	10.50	29.4
	141.3	330.2	44.50	185.7		28.40	266.7	
6	6.625	14.00	1.880	8.500	12	1.120	11.50	36.1
	168.3	355.6	47.80	215.9		28.40	292.1	
8	8.625	16.50	2.190	10.62	12	1.250	13.75	58.9
	219.1	419.1	55.60	269.7		31.75	349.3	
10	10.75	20.00	2.500	12.75	16	1.380	17.00	97.5
	273.0	508.0	63.50	323.9		35.10	431.8	
12	12.75	22.00	2.620	15.00	20	1.380	19.25	124
	323.8	558.8	66.55	381.0		35.10	489.0	
14	14.00	23.75	2.750	16.25	20	1.500	20.75	151
	355.6	603.3	69.85	412.8		38.10	527.1	
16	16.00	27.00	3.000	18.50	20	1.620	23.75	214
	406.4	685.8	76.20	469.9		41.10	603.3	
18	18.00	29.25	3.250	21.00	20	1.750	25.75	272
	457.2	743.0	82.60	533.4		44.50	654.1	
20	20.00	32.00	3.500	23.00	24	1.750	28.50	349
	508.0	812.8	88.90	584.2		44.50	723.9	
24	24.00	37.00	4.000	27.25	24	2.000	33.00	533
	609.6	939.8	101.6	692.2		50.80	838.2	

Notes

- Weights are based on manufacturer's data and are approximate.
- For ring joint facings see page 8-6.
- For tolerances see page 8-4.

# Blind Flanges - ANSI B16.5



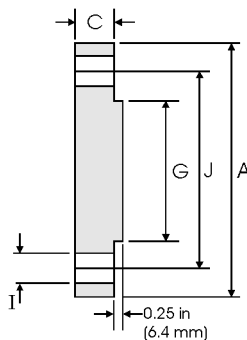
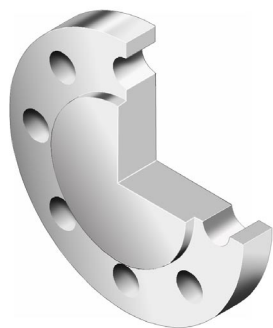
## Class 900 lb

Nominal Pipe Size	Pipe	Flange Data			Raised Face	Drilling Data			Weight
		<b>A</b>	<b>C</b>	<b>G</b>	<b>H</b>	<b>I</b>	<b>J</b>		
	Outside Diameter	Overall Diameter	Flange Thickness min	Face Diameter	Number of Holes	Bolt Hole Diameter	Diameter of Circle of Holes	kg/piece	
	in mm	in mm	in mm	in mm		in mm	in mm		
1/2	0.840	4.750	0.880	1.380	4	0.880	3.250	1.77	
	21.30	120.6	22.30	35.10		22.30	82.50		
3/4	1.050	5.120	1.000	1.690	4	0.880	3.500	2.42	
	26.70	130.0	25.40	42.90		22.30	88.90		
1	1.315	5.880	1.120	2.000	4	1.000	4.000	3.57	
	33.40	149.3	28.40	50.80		25.40	101.6		
1 1/4	1.660	6.250	1.120	2.500	4	1.000	4.380	4.15	
	42.20	158.7	28.40	63.50		25.40	111.2		
1 1/2	1.900	7.000	1.250	2.880	4	1.120	4.880	5.75	
	48.30	177.8	31.70	73.15		28.40	123.9		
2	2.375	8.500	1.500	3.620	8	1.000	6.500	10.1	
	60.30	215.9	38.10	91.90		25.40	165.1		
2 1/2	2.875	9.620	1.620	4.120	8	1.120	7.500	14.0	
	73.00	244.3	41.10	104.6		28.40	190.5		
3	3.500	9.500	1.500	5.000	8	1.000	7.500	13.1	
	88.90	241.3	38.10	127.0		25.40	190.5		
4	4.500	11.50	1.750	6.190	8	1.250	9.250	26.9	
	114.3	292.1	44.50	157.2		31.70	234.9		
5	5.563	13.75	2.000	7.310	8	1.380	11.00	36.5	
	141.3	349.2	50.80	185.7		35.00	279.4		
6	6.625	15.00	2.190	8.500	12	1.250	12.50	47.40	
	168.3	381.0	55.60	215.9		31.70	317.0		
8	8.625	18.50	2.500	10.62	12	1.500	15.50	82.5	
	219.1	469.9	63.50	269.7		38.10	393.7		
10	10.75	21.50	2.750	12.75	16	1.500	18.50	122	
	273.0	546.1	69.85	323.9		38.10	469.9		
12	12.75	24.00	3.120	15.00	20	1.500	21.00	173	
	323.8	609.6	79.25	381.0		38.10	533.4		
14	14.00	25.25	3.380	16.25	20	1.620	22.00	206	
	355.6	641.3	85.80	412.8		41.10	558.8		
16	16.00	27.75	3.500	18.50	20	1.750	24.25	259	
	406.4	704.8	88.90	469.9		44.40	615.9		
18	18.00	31.00	4.000	21.00	20	2.000	27.00	367	
	457.2	787.4	101.6	533.4		50.80	685.8		
20	20.00	33.75	4.250	23.00	20	2.120	29.50	463	
	508.0	857.2	107.9	584.2		53.80	749.3		
24	24.00	41.00	5.500	27.25	20	2.620	35.50	876	
	609.6	1041.4	139.7	692.2		66.55	901.7		



### Notes

- Weights are based on manufacturer's data and are approximate.
- For ring joint facings see page 8-6.
- For tolerances see page 8-4.

# Blind Flanges - ANSI B16.5



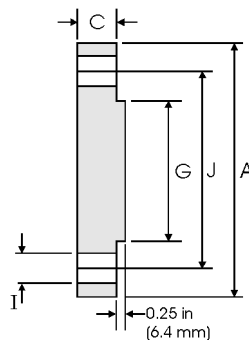
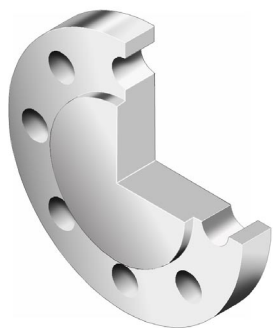
## Class 1500 lb

Nominal Pipe Size	Pipe	Flange Data			Raised Face	Drilling Data		Weight
		<b>A</b>	<b>C</b>	<b>G</b>	<b>H</b>	<b>I</b>	<b>J</b>	
	Outside Diameter	Overall Diameter	Flange Thickness min	Face Diameter	Number of Holes	Bolt Hole Diameter	Diameter of Circle of Holes	kg/piece
	in mm	in mm	in mm	in mm		in mm	in mm	
1/2	0.840 21.30	4.750 120.6	0.880 22.30	1.380 35.10	4	0.880 22.30	3.250 82.50	1.77
3/4	1.050 26.70	5.120 130.0	1.000 25.40	1.690 42.90	4	0.880 22.30	3.500 88.90	2.42
1	1.315 33.40	5.880 149.3	1.120 28.40	2.000 50.80	4	1.000 25.40	4.000 101.6	3.57
1 1/4	1.660 42.20	6.250 158.7	1.120 28.40	2.500 63.50	4	1.000 25.40	4.380 111.2	4.15
1 1/2	1.900 48.30	7.000 177.8	1.250 31.70	2.880 73.15	4	1.120 28.40	4.880 123.9	5.75
2	2.375 60.30	8.500 215.9	1.500 38.10	3.620 91.90	8	1.000 25.40	6.500 165.1	10.1
2 1/2	2.875 73.00	9.620 244.3	1.620 41.10	4.120 104.6	8	1.120 28.40	7.500 190.5	14.0
3	3.500 88.90	10.50 266.7	1.880 47.70	5.000 127.0	8	1.250 31.70	8.000 203.2	19.1
4	4.500 114.3	12.25 311.1	2.120 53.80	6.190 157.2	8	1.380 35.00	9.500 241.3	29.9
5	5.563 141.3	14.75 374.6	2.880 73.15	7.310 185.7	8	1.620 41.10	11.50 292.1	58.4
6	6.625 168.3	15.50 393.7	3.250 82.50	8.500 215.9	12	1.500 38.10	12.50 317.5	71.8
8	8.625 219.1	19.00 482.6	3.620 91.90	10.62 269.7	12	1.750 44.40	15.50 393.7	122
10	10.75 273.0	23.00 584.2	4.250 107.9	12.75 323.9	12	2.000 50.80	19.00 482.6	210
12	12.75 323.8	26.50 673.1	4.880 123.9	15.00 381.0	16	2.120 53.8	22.50 571.5	316
14	14.00 355.6	29.50 749.3	5.250 133.3	16.25 412.8	16	2.380 60.45	25.00 635.0	420
16	16.00 406.4	32.50 825.5	5.750 146.0	18.50 469.9	16	2.620 66.55	27.75 704.8	558
18	18.00 457.2	36.00 914.4	6.380 162.0	21.00 533.4	16	2.880 73.15	30.50 774.7	760
20	20.00 508.0	38.75 984.2	7.000 177.8	23.00 584.2	16	3.120 79.25	32.75 831.8	965
24	24.00 609.6	46.00 1168.4	8.000 203.2	27.25 692.2	16	3.620 91.90	39.00 990.6	1558

**Notes**

- Weights are based on manufacturer's data and are approximate.
- For ring joint facings see page 8-6.
- For tolerances see page 8-4.

# Blind Flanges - ANSI B16.5



## Class 2500 lb

Nominal Pipe Size	Pipe	Flange Data			Raised Face	Drilling Data			Weight
		<b>A</b>	<b>C</b>	<b>G</b>	<b>H</b>	<b>I</b>	<b>J</b>		
	Outside Diameter	Overall Diameter	Flange Thickness min	Face Diameter	Number of Holes	Bolt Hole Diameter	Diameter of Circle of Holes	kg/piece	
	in mm	in mm	in mm	in mm		in mm	in mm		
1/2	0.840	5.250	1.190	1.380	4	0.880	3.500	2.99	
	21.30	133.4	30.20	35.10		22.40	88.90		
3/4	1.050	5.500	1.250	1.690	4	0.880	3.750	3.50	
	26.70	139.7	31.70	42.90		22.40	95.30		
1	1.315	6.250	1.380	2.000	4	1.000	4.250	4.96	
	33.40	158.8	35.10	50.80		25.40	108.0		
1 1/4	1.660	7.250	1.500	2.500	4	1.120	5.120	7.35	
	42.20	184.2	38.10	63.50		28.40	130.0		
1 1/2	1.900	8.000	1.750	2.880	4	1.250	5.750	10.4	
	48.30	203.2	44.50	73.15		31.75	146.1		
2	2.375	9.250	2.000	3.620	8	1.120	6.750	15.6	
	60.30	235.0	50.80	91.90		28.40	171.5		
2 1/2	2.875	10.50	2.250	4.120	8	1.250	7.750	22.6	
	73.00	266.7	57.15	104.6		31.75	196.9		
3	3.500	12.00	2.620	5.000	8	1.380	9.000	34.8	
	88.90	304.8	66.55	127.0		35.10	228.6		
4	4.500	14.00	3.000	6.190	8	1.620	10.75	53.9	
	114.3	355.6	76.20	157.2		41.10	273.1		
5	5.563	16.50	3.620	7.310	8	1.888	12.75	90.8	
	141.3	419.1	91.90	185.7		47.88	323.9		
6	6.625	19.00	4.250	8.500	8	2.120	14.50	141	
	168.3	482.6	108.0	215.9		53.80	368.3		
8	8.625	21.75	5.000	10.62	12	2.120	17.25	214	
	219.1	552.5	127.0	269.7		53.80	438.2		
10	10.75	26.50	6.500	12.75	12	2.620	21.25	411	
	273.0	673.1	165.1	323.9		66.55	539.8		
12	12.75	30.00	7.250	15.00	12	2.880	24.38	592	
	323.8	762.0	184.2	381.0		73.15	619.3		

### Notes

- Weights are based on manufacturer's data and are approximate.
- For ring joint facings see page 8-6.
- For tolerances see page 8-4.